

DALY WORLD

LEO A DALY NEWS AND INFORMATION VOLUME 76 NUMBER 1

PLANNING • ARCHITECTURE • ENGINEERING • INTERIORS



2 Intelligent Interiors

Smart spaces, systems, and strategies for the management challenges and technological frontiers of the '90s

Union Pacific's Harriman Dispatch Center, Omaha

News

CURRENT & RECENT PROJECTS

Bishop Clarkson Memorial Hospital

OMAHA

DALY's most recent update for Omaha's Clarkson Hospital has produced new-look surgical suites, laboratories, MRI and diagnostic imaging areas, and a warmly detailed LDRP (for labor, delivery, recovery and post-partum) complex that Clarkson appropriately calls "The Birth Place."

Photo: Pat Dickey



Natural Sciences Laboratory, California State University at Northridge

LOS ANGELES

DALY's 76,000-sf expansion of CSUN's Science Center adds new laboratories, classrooms, and a 40-foot-tall planetarium in a highly energy-efficient new wing that will also temporarily accommodate classes from the Science Center's main building as its 160,000-sf renovation by DALY moves toward completion in 1993.

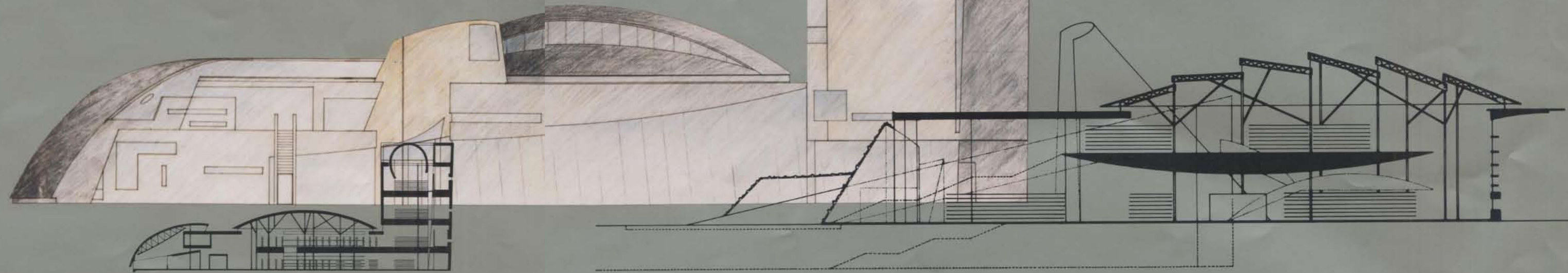
Photo: Paul Bielenberg



Arizona State University Law Library

TEMPE, AZ

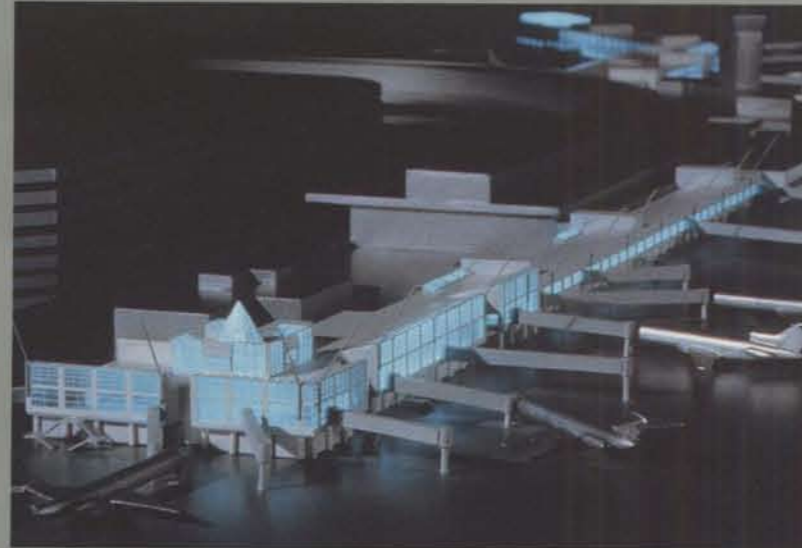
DALY is collaborating with Atlanta's Scogin, Elam & Bray on the design of Arizona State University's new law library. Reference and core collections will occupy the building's distinctively shaped horizontal component, with spaces for legal research and special collections in its tower.



Seattle-Tacoma International Airport

SEATTLE

The \$53-million expansion of Sea-Tac's Concourses B, C, and D, designed by DALY and Seattle's NBBJ Group, will bring new gates, retail spaces, VIP rooms, and airline-hold areas to the Pacific Northwest's busiest gateway in 1992.



Day Care Centers, Social Security Administration

BALTIMORE

Recently finished and already full of kids are two 10,000-sf day care centers for the children of Social Security Administration (SSA) staff, converted by DALY from existing offices at SSA's downtown and suburban Baltimore headquarters locations.

Photos: Ron Blunt



Imperial Palace Restaurant

OMAHA

Accurately detailed to capture the 10th-Century style of China's historic "Period of Elegance," Omaha's Imperial Palace, for which DALY provided architecture and engineering as well as interior design, has been named one of the nation's 10 best-designed restaurants by Restaurants & Institutions Magazine.

Photo: Pat Dickey

Citicorp Plaza

HONG KONG

Currently rising between Hong Kong's celebrated Bank of China and Hong Kong-Shanghai Bank towers is Citicorp Plaza, new Hong Kong headquarters of New York City-based Citibank NA. As it

did in the early '80s for Citibank's first Hong Kong headquarters tower and for more recent Citibank buildings in Seoul and Tokyo, DALY is managing design and construction of the 1.6-million-sf project as executive architect/engineer.



Washington College of Law, The American University

WASHINGTON, DC

A study of other law schools nationwide informed DALY's programming and classically-detailed design for the

American University's new Washington College of Law. The 130,000-sf building will house faculty offices, classrooms, moot and ceremonial courtrooms, and a library equipped for both conventional and computer-aided legal research. Construction starts in late 1991.