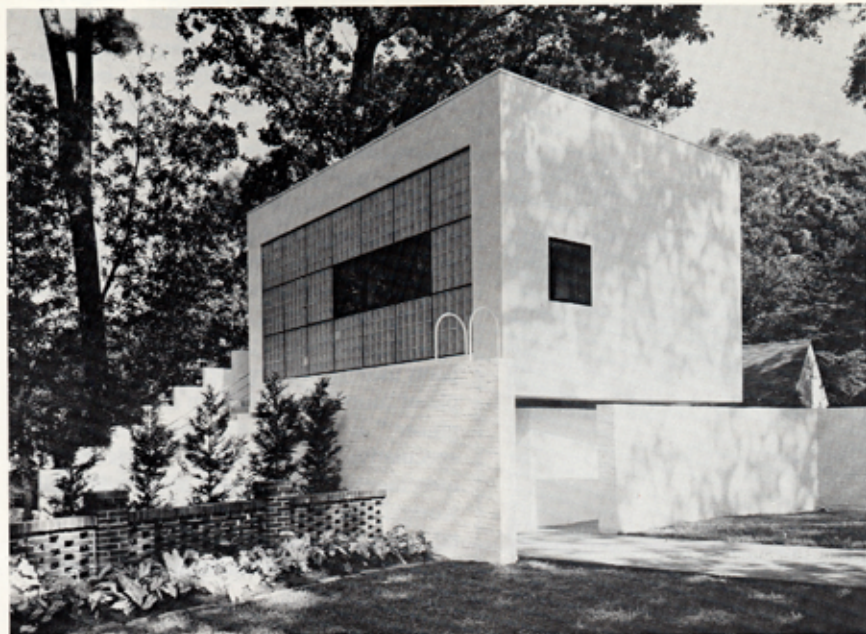


SARC 1986 continued



THE GARDEN-FACING FACADE OF ANTHONY AMES' GARDEN PAVILION FEATURES TRANSLUCENT GLASS BRICK TO FILTER THE SUNLIGHT AS IT PASSES THROUGH THE TREES. DESIGNED AS A RETREAT FOR THE CLIENT, IT SERVES AS A STUDY/GUEST HOUSE.



IN DESIGNING THE H. LEE MOFFITT CANCER CENTER AND RESEARCH INSTITUTE, THE ARCHITECTS PLACED A CIRCULATION AXIS IN THE CENTER, BETWEEN TWO CONTRASTING HALVES, ONE THE BED UNIT BLOCK AND THE OTHER THE DIAGNOSTIC AND TREATMENT BLOCK. THE JURY PRAISED THE "PLAYFUL MANIPULATION OF FORM AND OVERALL INVITING IMAGERY OF A STRUCTURE USUALLY INTIMIDATING IN NATURE."

functions, the other half for diagnostic treatment and research functions. Architectural expression was designed to lend an attitude and feeling of permanence; further, in the Bed Unit Block, rooms were grouped around an open-plan nurses' station to create a comforting and supportive environment for the seriously ill patient. The jury was "delighted that such design attention was given to a building of a traumatic function."

In designing the corporate headquarters for the Rock Tenn Manufacturing Company, Lord & Sargent, Inc., faced design criteria including responsiveness to the industrial South, enhanced visibility for the company and some reflection of evolving technologies. Located on a largely industrial site in old Norcross, adjacent to a railroad line, the headquarters building was sited alongside the railroad track for high visibility and to provide for future buildings planned for the site. The jury was impressed "by the conceptual industrial wall which recalls mill masonry architecture, linear in design, disintegrating at the ends...the contrast between the historic traditional form and the distinctly modern vocabulary at the building's ends was clearly successful."

When Parker and Scogin Architects, Inc. were commissioned to design The High Museum at Georgia-Pacific Center, they were faced with designing a new facility—a satellite to the High Museum in Midtown Atlanta—for an existing space in the corpo-

rate tower previously intended for another use. The "greenhouse"-type enclosure, three stories in height and 150 ft. in length, extends from the southern lot line of the complex at street level, with its width 39 ft. at the lowest level and 24 ft. at the highest. Visible from the lobby of the office tower, the museum was designed to distinguish it from its context—"architecture within architecture" according to the architects. The image was achieved with a ramp which connects with gallery spaces of differing size on several levels. The jury called it "a clear extension of the Meier building's vocabulary but with fresh concept of detail and material—handsomely conceived in its movement system and variety of exhibition spaces...highly inviting"

The residential entry in the SARC Design Awards program was designed by Kemp Mooney. The site for the single-family residence was a steeply sloping lot among 1980 bungalows, each characterized by classical fragments, in the Garden Hills area of Atlanta. The owners wanted open space while preserving a sense of place for specific activities such as cooking and dining, as well as exterior spaces relating to each of the major spaces within the house. In response to the site conditions which required many level changes, "the notion of procession became a design tool," according to Mooney. The jury commented on "the handsomest front facade of the house which intentionally recalls the older neigh-

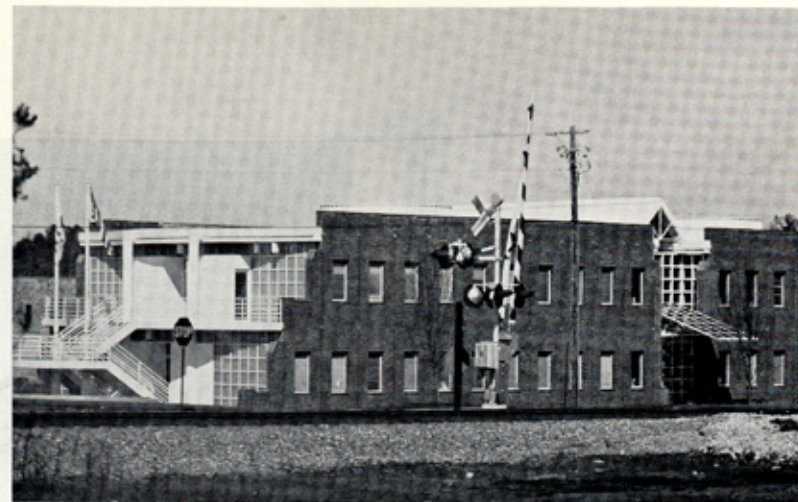
borhood in which it is sited." Economy of material resulted in "a sensitive balance of design...and interior spaces were rich in detail and variety."

Burnstudio and Jenkins-Peer, A Joint Venture, of Charlotte, N.C. received their award for an addition to the Lenoir County Courthouse, "a handsomely detailed, sensitively proportioned structure that related to its earlier component in a very successful manner."

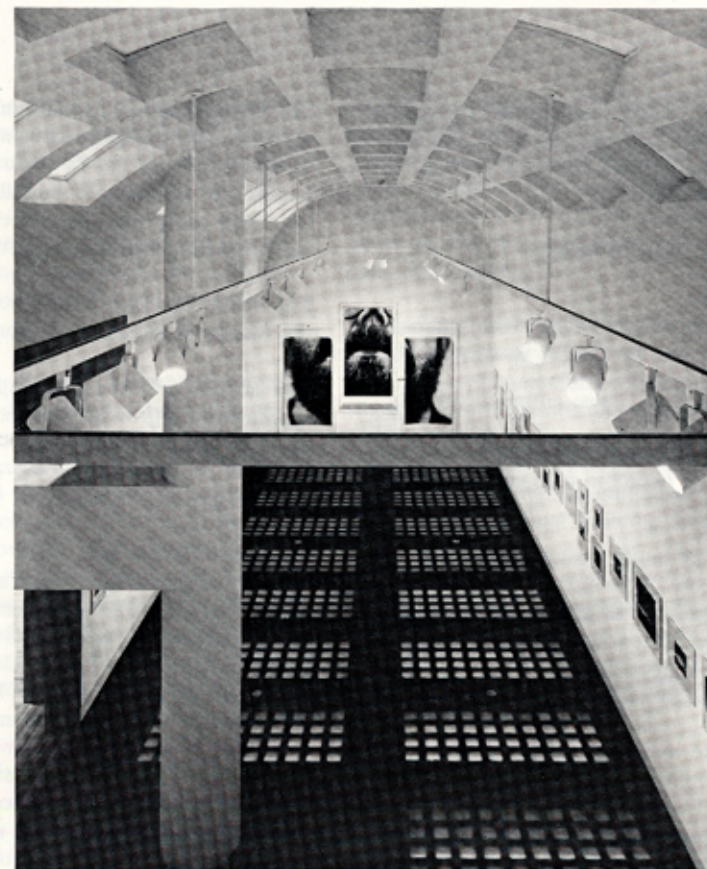
Clark & Menefee Architects, Charleston, S.C., were commended by the jury for their design of the Middleton Inn in Charleston. "This elegant, pristine design related beautifully to its site...the sense of scale, choice and detail of materials, and play of volume are highly successful."

In a new award program for young practitioners who have maintained a private practice of architecture for a maximum of three years, Knight Hepler & Hall Architects, P.A. of Charlotte, N.C. received the Young Architect Award.

The SARC Design Awards jury was chaired by Robert A. M. Stern, FAIA who presented the awards. Other jury members were Peter Gluck, AIA of Peter Gluck and Associates, New York; Arthur May AIA, Kohn Pederson Fox and Associates, New York; and James A. Murphy, AIA, Profession and Industry Editor of *Progressive Architecture*.



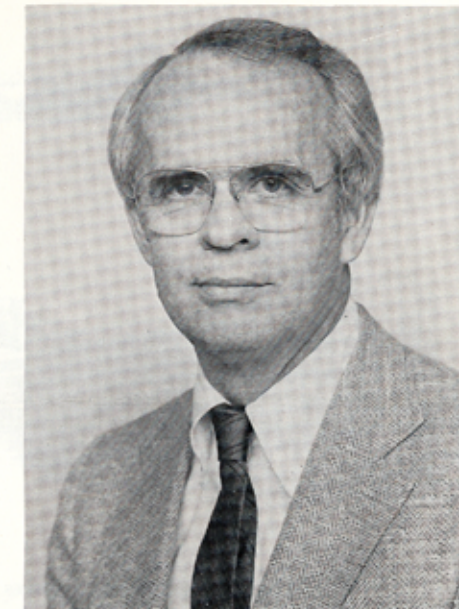
LORD & SARGENT'S DESIGN FOR THE ROCK TENN COMPANY CORPORATE HEADQUARTERS WAS PRAISED BY THE AWARDS JURY FOR THE SUCCESSFUL "CONTRAST BETWEEN THE HISTORIC TRADITIONAL FORM AND THE DISTINCTLY MODERN VOCABULARY AT THE BUILDING'S ENDS." THE SUCCESS OF THE DESIGN MAY BE JUDGED BY THE FACT THAT THE ARCHITECTS HAVE BEEN COMPLIMENTED A NUMBER OF TIMES FOR THEIR "ADAPTIVE REUSE OF AN OLD BUILDING."



THE HIGH MUSEUM AT THE GEORGIA PACIFIC CENTER IS LOCATED IN A "GREENHOUSE"-TYPE ENCLOSURE ON THE SOUTH SIDE OF THE OFFICE TOWER. ENCLOSURE OF LOWER GALLERIES PROVIDE PROTECTION FOR THE ART FROM DIRECT SUNLIGHT ENTERING THROUGH THE SOUTH-FACING GREENHOUSE STRUCTURE. ALL GLAZING HAS HIGH-EFFICIENCY ULTRAVIOLET FILTERING.

BRONZE MEDALS AWARDS

In addition to the SARC Design Awards, a number of other awards were presented at the convention.



RAYMOND F. STAINBACK

A Bronze Medal Award from the South Atlantic Region/AIA went to Raymond F. Stainback, Jr., FAIA "for devoted, enthusiastic and outstanding leadership and service to the profession as South Atlantic Regional Director, The American Institute of Architects, 1984-1986."



ROBERT S. WOODHURST, III

The Georgia Association, AIA Bronze Medal Award was presented to Robert S. Woodhurst, III "in appreciation of his loyalty, dedication and service during his presidency" this year.