



Architecture/Georgia
October, 1990

1989 GA/AIA DESIGN AWARDS

The Georgia Association, American Institute of Architects has announced winners in the 1989 GA/AIA Design Awards Program. Chairman of the Design Awards Committee was Kemp Mooney, AIA, of Atlanta. The jury, chaired by Charles Gwathmey, FAIA, included Robert Siegel, AIA, of Gwathmey Siegel & Associates, Architects, New York; Peter Hoppner, AIA, of The Hillier Group, Princeton, N.J.; and Philip Babb, AIA, of Philip Babb Architect, New York. Of seventy-seven submittals, eight were chosen to receive awards. A design awards program was begun in 1973 by the Georgia Association, AIA, to encourage excellence in architecture, to bring public recognition to distinguished design by Georgia architects and to recognize the vital role played by discerning clients.

■

AWARD FOR EXCELLENCE

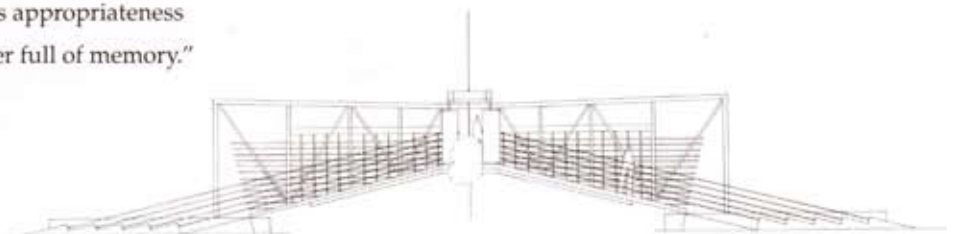
THE BRIDGE AT CONCOURSE

A Folly in the Landscape
Atlanta, Georgia

SCOGIN ELAM AND BRAY ARCHITECTS

A team (contractor) Anonymous Friend, David Biddle, CNE Enterprises, A.J. Concrete Pumping, John Caudle, Nancy Moynihan, Buzz Biddle and A. Derrick, Inc.

Spanning a small lagoon in a man-made lake at a multi-use complex, the Bridge at Concourse was designed by the architects as "an object in the landscape . . . a folly, an object of pleasure and enjoyment; an unreasonable combination of bridge parts, unnecessary and suggestive, demanding the attention of the crosser." The jury, calling it "highly poetic and lyrical . . . a piece of sculpture," gave it an Award for Excellence in Architecture. They commended Scogin Elam and Bray for its appropriateness "as a gesture – a focal point . . . a sense of center full of memory."



AWARD FOR EXCELLENCE



NEW VISIONS

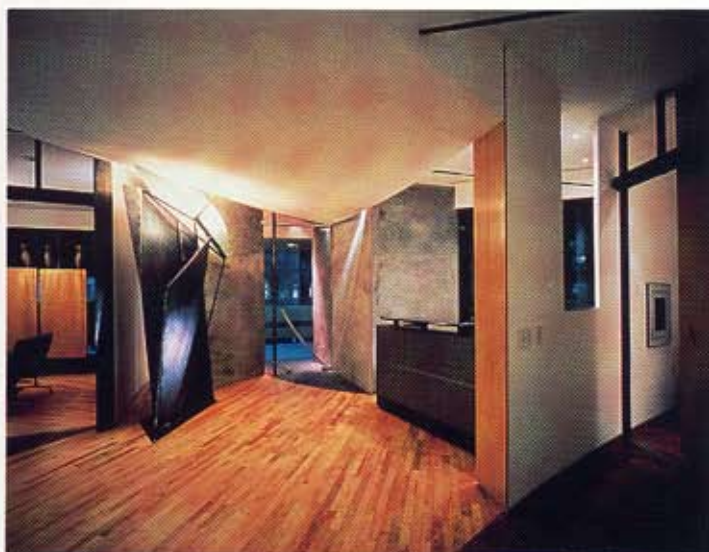
City Sponsored Gallery
Atlanta, Georgia

SCOGIN ELAM AND BRAY ARCHITECTS
Welch Tarkington Inc., *General Contractor*

The New Visions Gallery, designed by Scogin Elam and Bray for the Bureau of Cultural Affairs for the City of Atlanta, is located in Midtown Atlanta. Highly visible from the exterior, the gallery provides exhibition space to young and emerging artists who often are supported by grants and fellowships from the Bureau. Construction was partially funded by the Bureau. Trammell Crow, Inc. made the space available at much-reduced rent and provided a construction allowance, and the architects donated their time. An Award for Excellence in Architecture was given by the jury which called it "an airy, transparent space with a high intensity of active architecture . . . a project of contrasts."



AWARD FOR EXCELLENCE



HERMAN MILLER SHOWROOM

Atlanta, Georgia

SCOGIN ELAM AND BRAY ARCHITECTS

Axis Twenty; Newcomb and Boyd; Ramon Luminance Design;
Consultants

Welch Tarkington Inc.; General Contractor

An Award for Excellence in Architecture went to Scogin Elam and Bray for their design of the furniture showroom and administrative facility of Herman Miller, Inc. in Atlanta. The architects stated "it is an architecture of and about the attitudes, desires, interests and goals of its owner," a company which has long had a "philosophy of rigorous attention to detail, a common-sense attitude toward the making of things, combined with a sincere fascination with the creative spirit . . . The entire space is the showroom." The jury called it "an environment of exceptional craft, material, color, texture and light . . . highly inventive . . . a very rich, intriguing place of commerce, to sell an image of wares."

