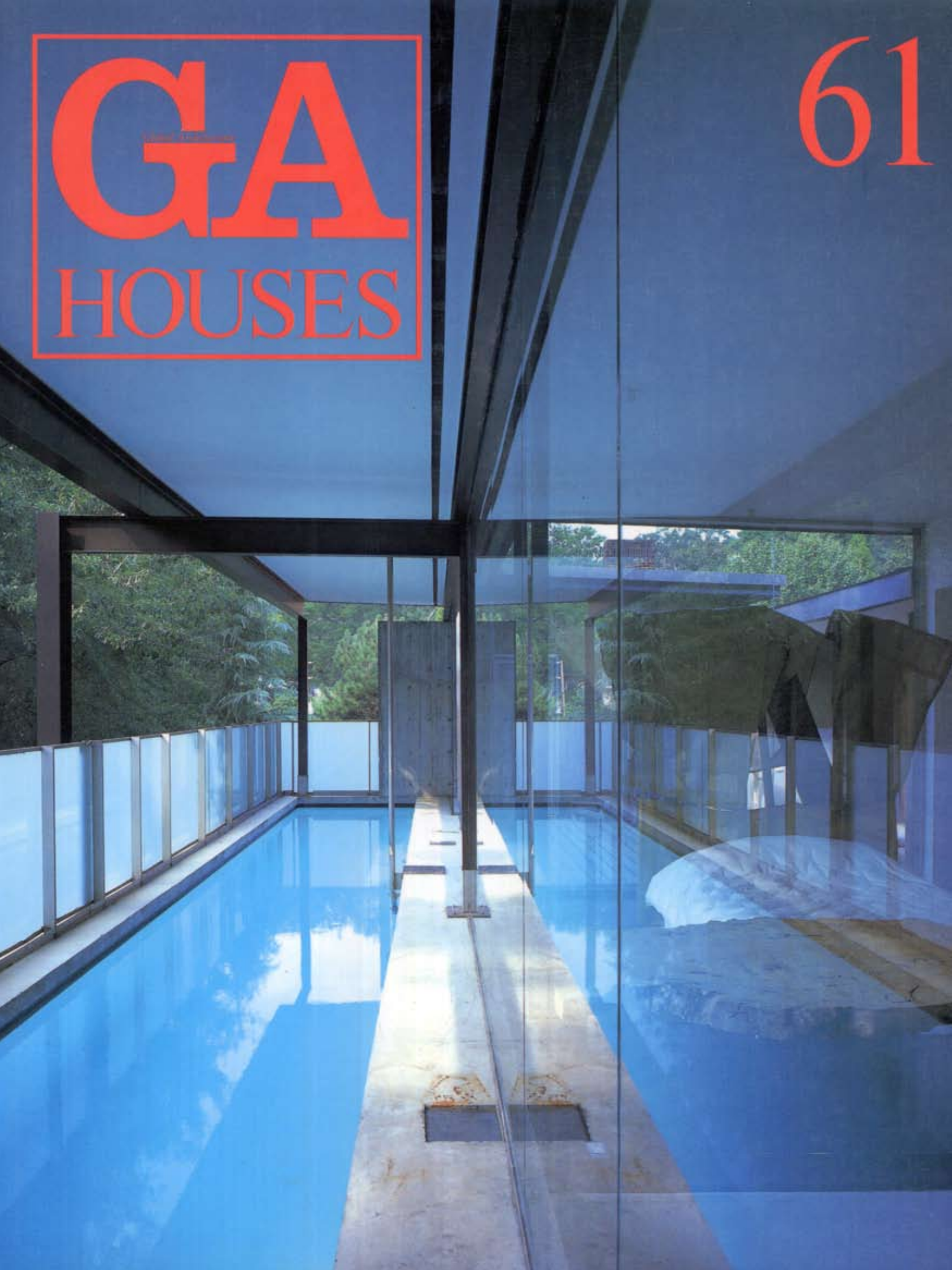


GA
HOUSES

61



Global Architecture
G+A
HOUSES

61



SCOGIN ELAM AND BRAY

64 WAKEFIELD
Atlanta, Georgia, U.S.A.
Design: 1996—
Construction: 1996—

Photos: Y. Ptasoglou

Architects: Scogin Elam and Bray Architects, Inc.—Mack Scogin and Merrill Elam with Lloyd Bray
Project team: Jeff Atwood
Engineer: Palmer Engineering Company, structural
Consultants: Edward L. Daugherty, Landscape

Architect, landscape: Ramon Luminance Design
lighting: Aqua Blue Pools, Inc., pool installation; Waterworks, pool liner; Paul Wilson, metalwork; Custom Woodwork, cabinetwork; Scogin Elam and Bray Architects, Inc., interior
General contractor: John Wesley Hammer Construction Company

Opal ripped through Atlanta... a dislocated hurricane... leveling trees and wreaking havoc. A six foot caliper water oak... one of the grand residents of the neighborhood... totaled the brick monopoly-block box house from ridge beam to foundations, affixing us to a major reconsideration of the premises.

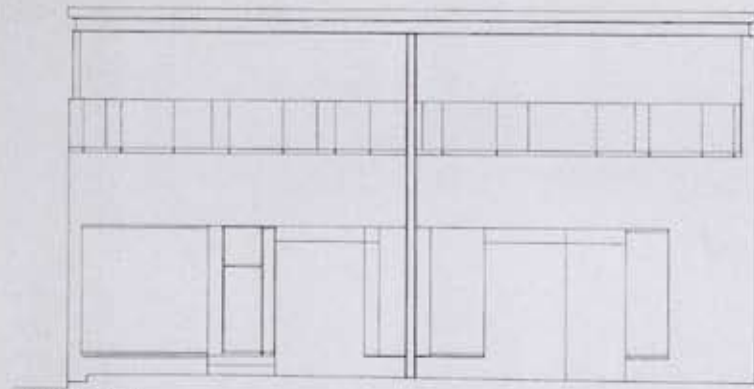
The site, small with a shared driveway, fronts south looking across the street toward the neighborhood park, swimming pool and tennis courts in the draw, and a nature area in the woods on the hill beyond. The idea of a lap pool drove the process... dreams of exercise and relaxation... recollections of the Josephine Baker house... visions of the Italian rationalists' health clinics... Only the seventy foot width of the site afforded the length necessary for the pool. So the pool went to second floor, spanning the spaces of the floor below and gathering in the south light. Shielded from the street by a translucent glass wall but open to the sky and air, the roof deck and pool challenge the very notion of public/private. Passersby hear the splashing. We know which neighbor is walking their dog by the sound that the collar and leash make. No swimsuit is required.

The pool is constructed of poured-in-place reinforced concrete with a plaster lining. The house is a wood frame structure with a stucco and glass enclosing surfaces. Interior materials include painted gypsum wall board and cementitions.

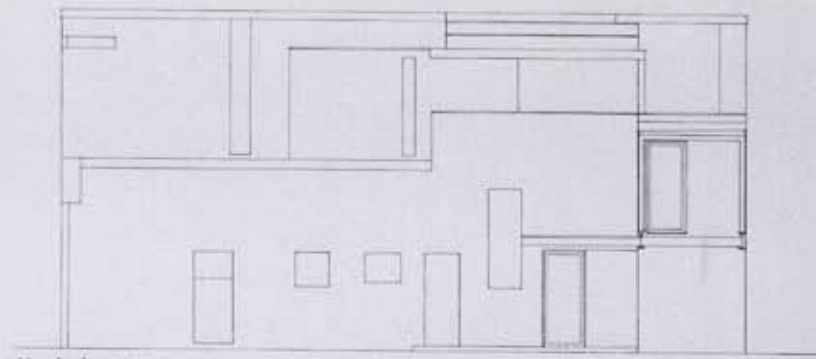
アトランタを切り裂いて去った<オパール>……道路の逸れたハリケーン……薙ぎ倒された木々やめちやくちな破壊。6フィートの二股のクロカシ……素晴らしく大きな隣人のひとり……棟梁から基礎まで完全に崩れた煉瓦造のボックス・ハウス。これらが、われわれを、前提条件を再検討する気持ちに駆り立てたものである。

共有のドライブウェイが付いた小さな敷地は、南を向き、道路の向こうには公園や潤れ谷にある水泳プールとテニスコートが、そしてさらに彼方の丘に面した森の自然がひろがっている。ラッププールをつくるという考えが設計プロセスを押し進めた……運動と息抜きへの夢……ジョセフィン・ペーカー邸への回想……イタリア合理主義者たちのヘルス・クリニックへの理想……。プールに必要な長さに提供しうる敷地の幅は70フィートしかない。そこで、プールは2階にあげられ、下の階の空間をまたぎ、南の光を集めることになった。半透明のガラス壁で道路からの視線は遮っているが、空と大気には開かれている。ルーフデッキとプールはまさにパブリックとプライベートの概念に挑戦している。通行人は水しぶきの音を聞く。首輪と引き綱がたてる音で、隣人の誰が今、犬を連れてそばを歩いているかが私たちには分かる。水着はつけないこと。

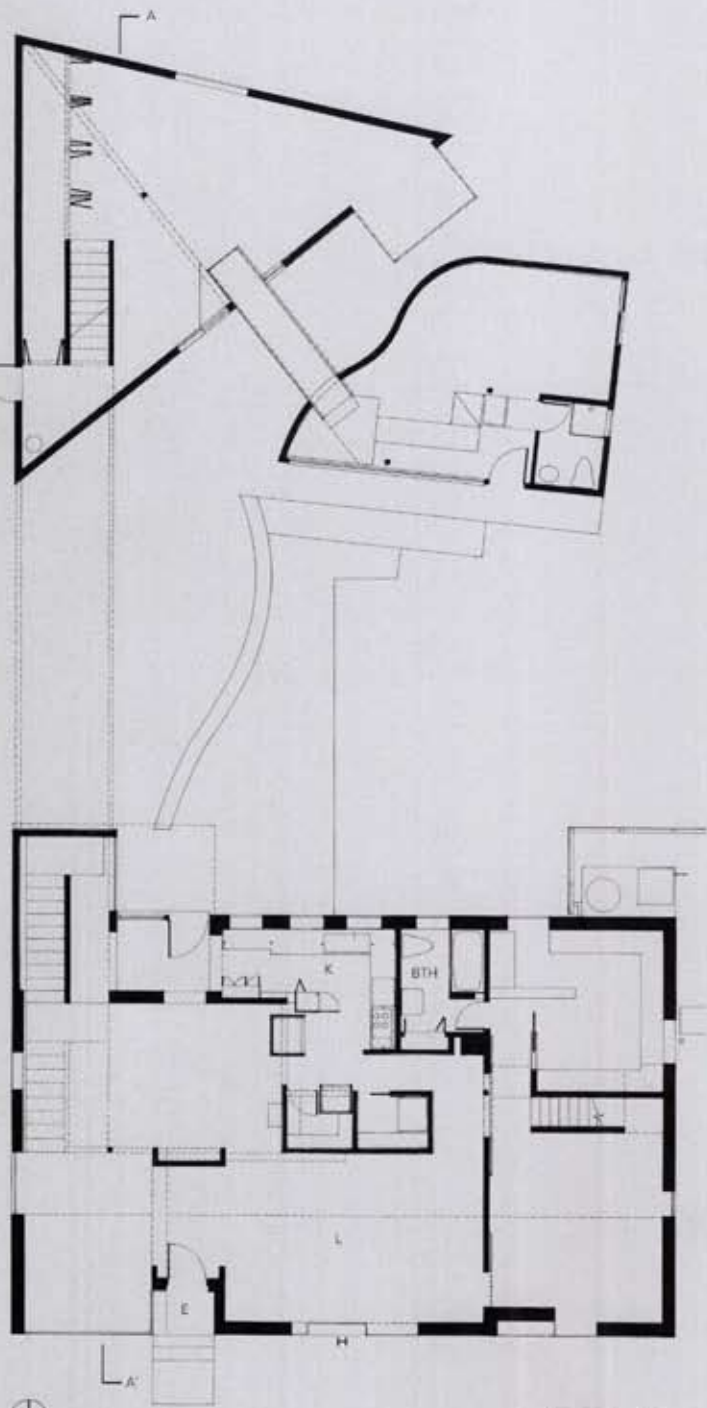
プールは現場打ちの鉄筋コンクリートにプラスター塗り。家の方は、木造枠組に外壁の仕上げはスタッコとガラスである。内部には塗装した石膏ボードやセメント質の材料などが使用されている。



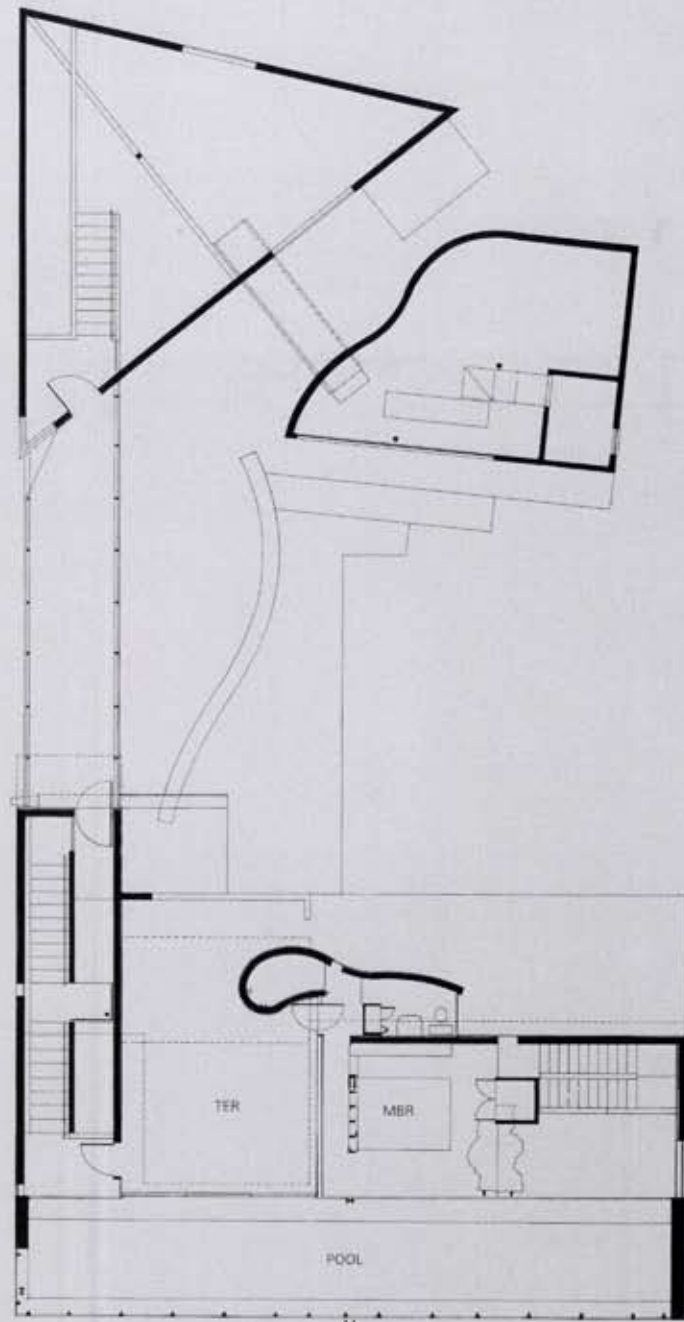
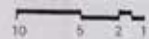
South elevation



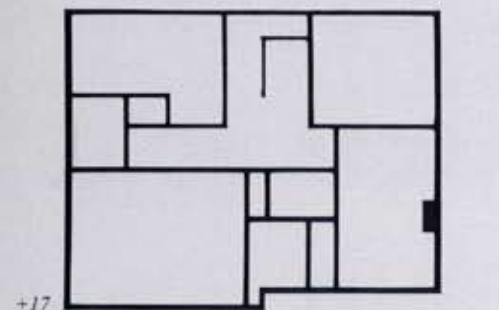
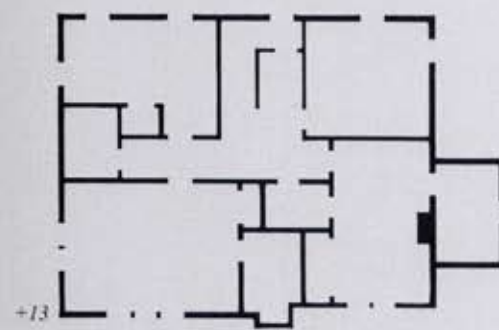
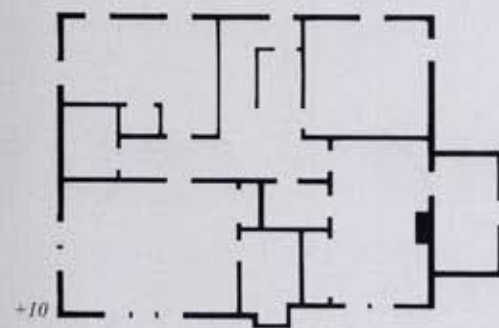
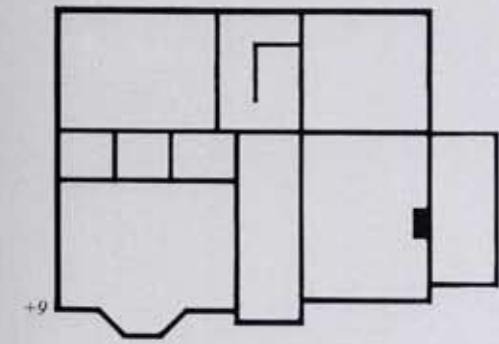
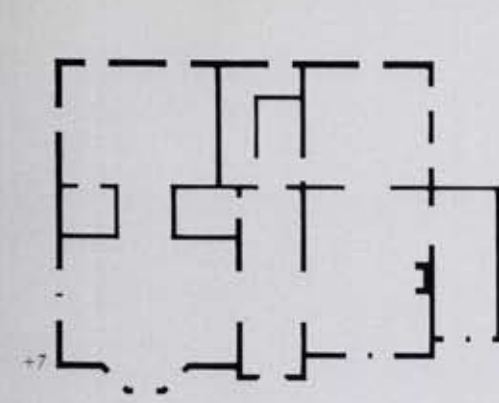
North elevation



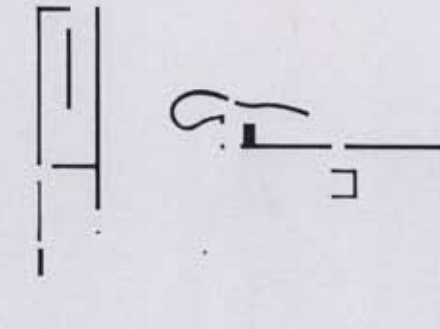
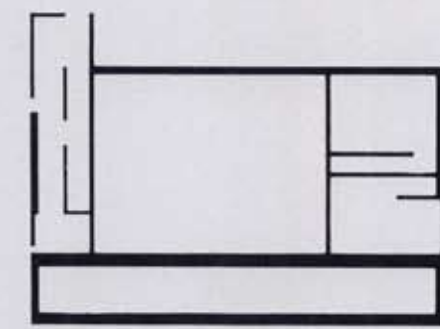
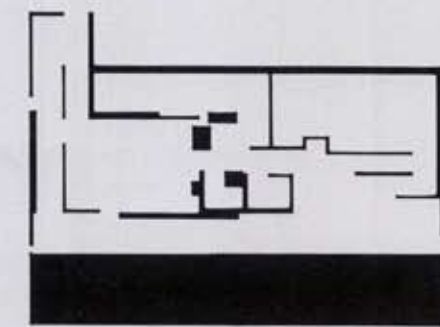
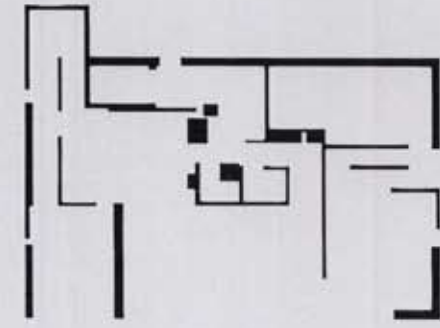
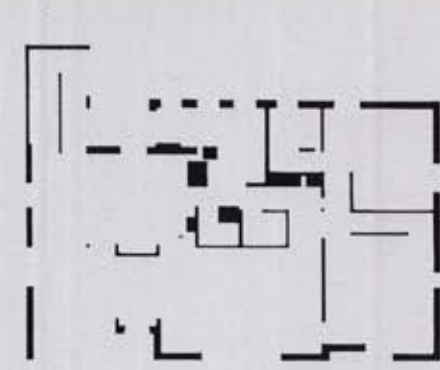
Lower level



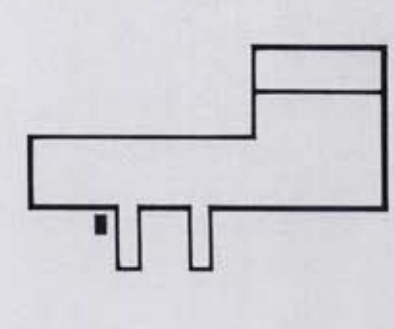
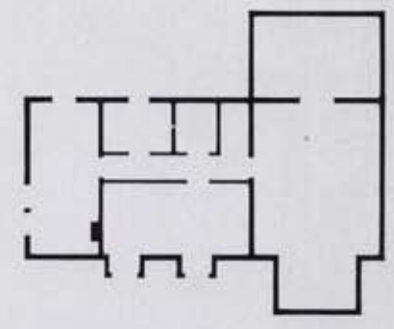
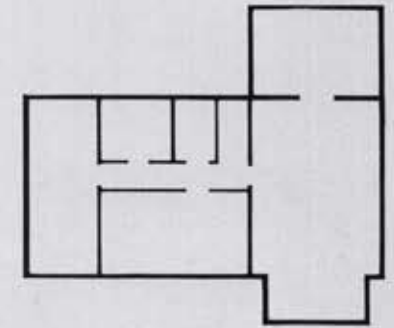
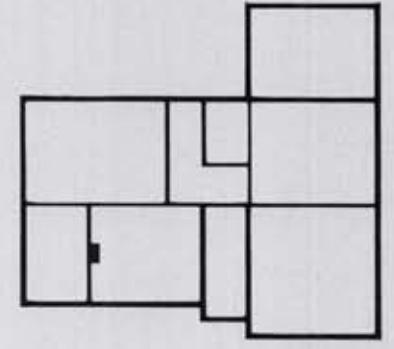
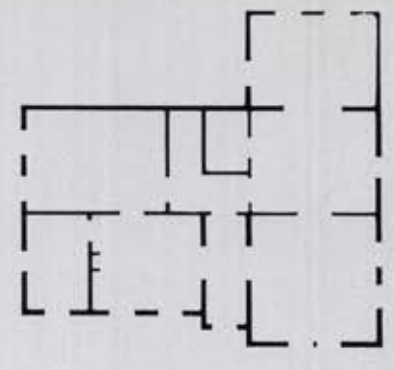
Upper level



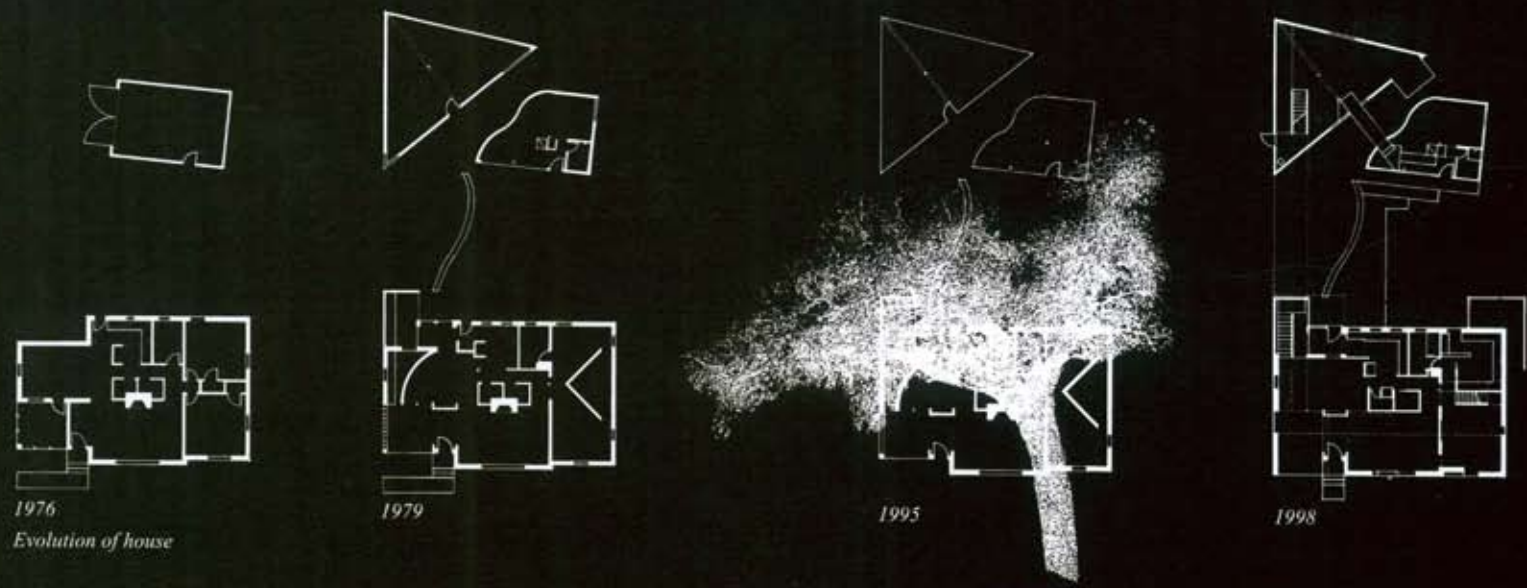
62 Wakefield
Horizontal sections with neighboring houses



64 Wakefield



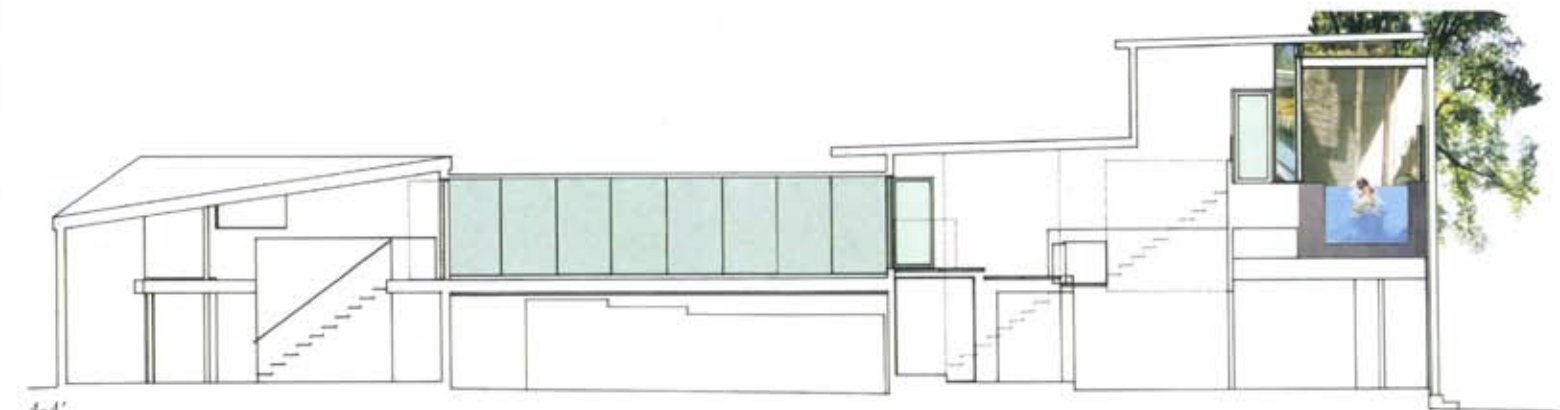
66 Wakefield



North elevation



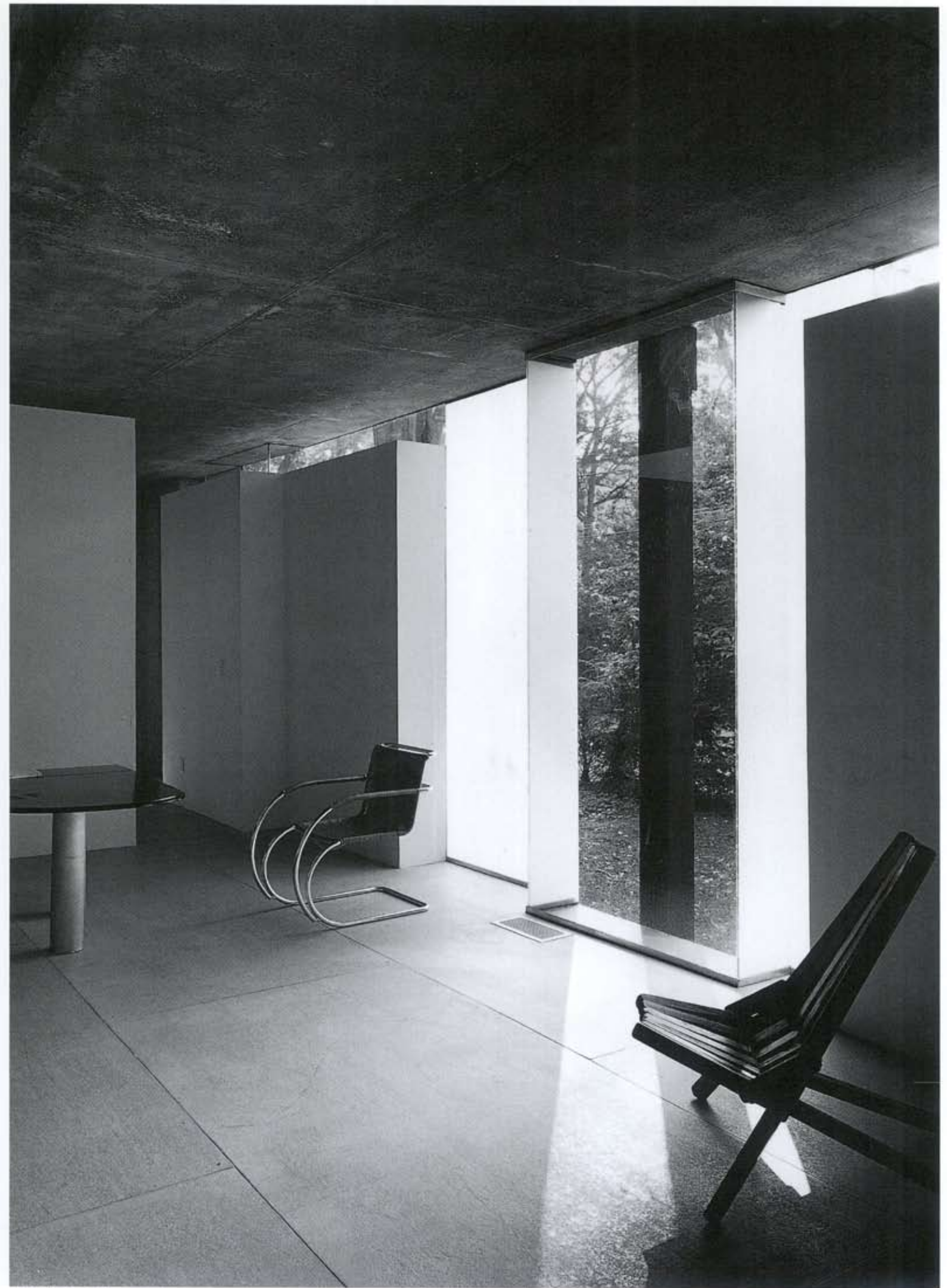
Entrance



A-A'
Sections



Lower level: view toward staircase on west



Lower level: window on south

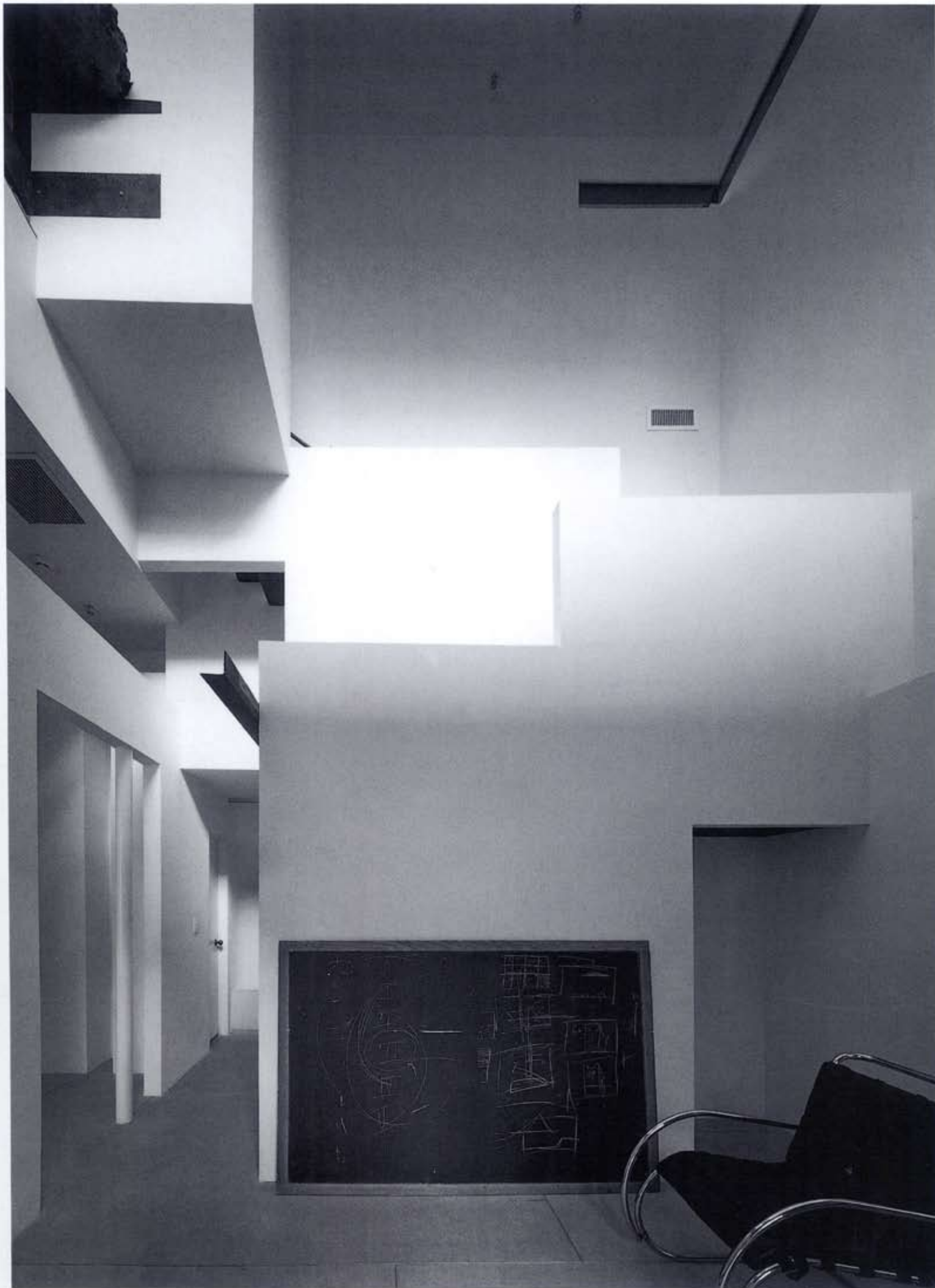


Living room



Lower level △▷





Lower level: double height space on east \triangle \triangleright





Staircase on west



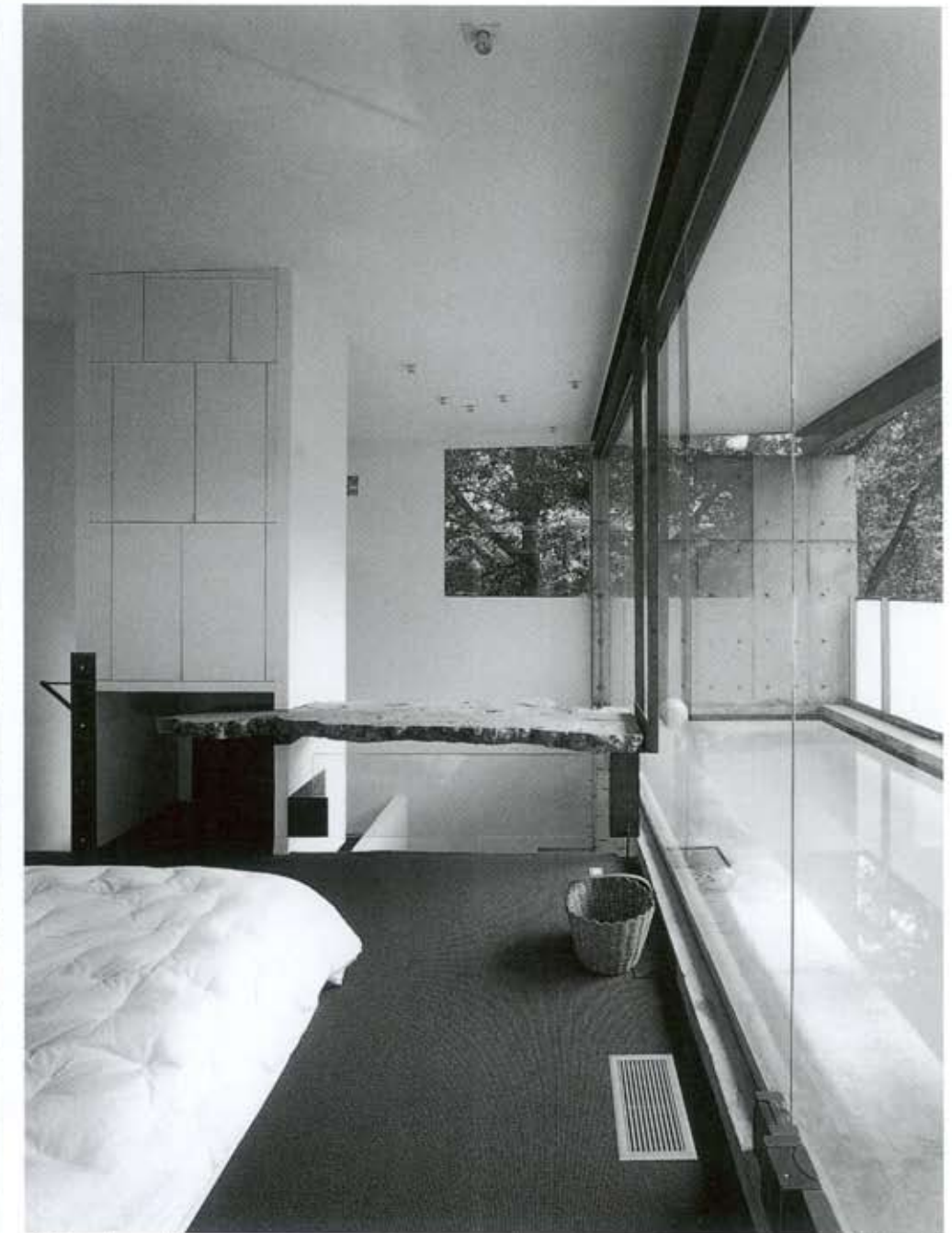
Staircase on east ▷



Upper level: bedroom and swimming pool



Upward view toward bedroom



◀Swimming pool

Bedroom △