



**THE NEW  
AMERICAN SWIMMING POOL**

**Innovations in Design  
and Construction**

**40 Case Studies**

**Edited by  
JAMES GRAYSON TRULOVE**



**64 Wakefield Pool** 1997  
**SCOGIN ELAM & BRAY ARCHITECTS**

*Owners:* Mack Scogin and Merrill Elam  
*Architect:* Scogin Elam & Bray Architects, Inc.,  
Atlanta, Georgia  
*Landscape Architect:* Edward L. Daugherty, Atlanta, Georgia  
*Design Team:* Mack Scogin, Merrill Elam  
*Engineer:* Chris DeBolis, Plamer Engineering Company  
*General Contractor:* Wes Stone, John Wesley Hammer  
Construction Company  
*Consultants:* Ramon Noya, Ramon Luminance Design  
(lighting), Aqua Blue Pools, Inc. (pool installation),  
Waterworks (pool liner), Paul Wilson (metalwork), Custom  
Woodwork (cabinet work)  
*Photography:* Timothy Hursley

*Location:* Atlanta, Georgia  
*Pool Type:* Lap pool  
*Size/Capacity:* 7' x 50' (11,781 gallons)  
*Maximum Depth:* 4'6"  
*Water Treatment System:* Manually administered chlorination  
*Heating System:* Thermostatically controlled, gas-fired heater  
*Construction Materials:* Cast-in-place reinforced concrete  
*Finish:* White vinyl liner with black vinyl top strip  
*Coping:* Concrete surround  
*Terrace:* Wood deck  
*Lighting:* Nicheless underwater pool lights

**Site**

Located on a small lot in midtown Atlanta, the site fronts south, looking across the street toward the neighborhood park, swimming pool, and tennis courts in the valley and a nature preserve on the hill beyond.

**Design**

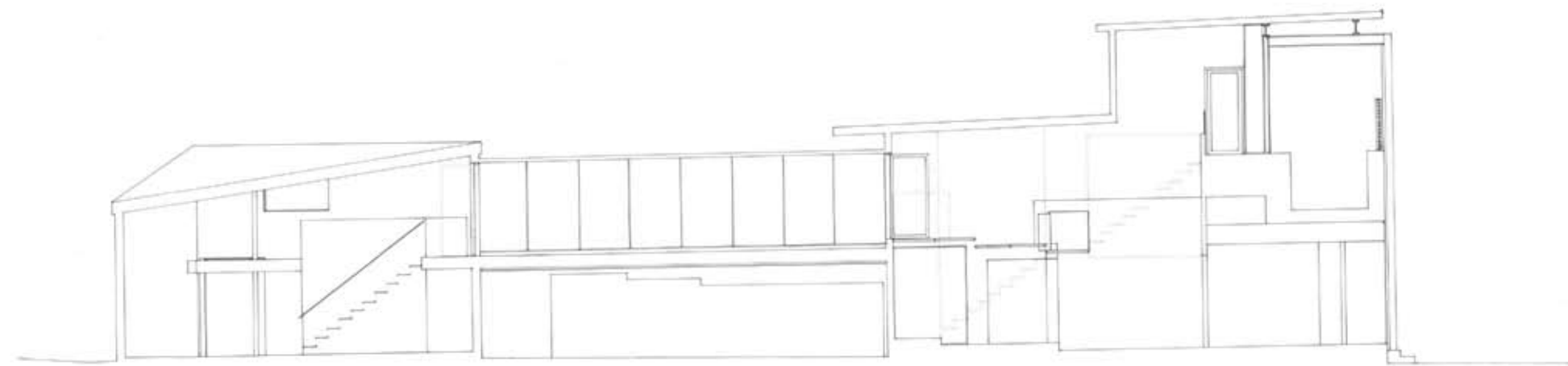
When the architects rebuilt their home from the ground up following a devastating hurricane in 1995, the idea of having a lap pool drove the design for the new house. Only the 70-foot width of the site afforded the length necessary for the pool, so they decided to locate it on the second floor, spanning the spaces of the floor below and gathering in the south light. Located at the front of the house, it is shielded from the street below by a translucent glass wall while the deck and pool are open to the sky.

The pool is constructed of poured-in-place reinforced concrete with a vinyl liner. The house is a wood-frame structure with stucco and glass enclosing spaces.

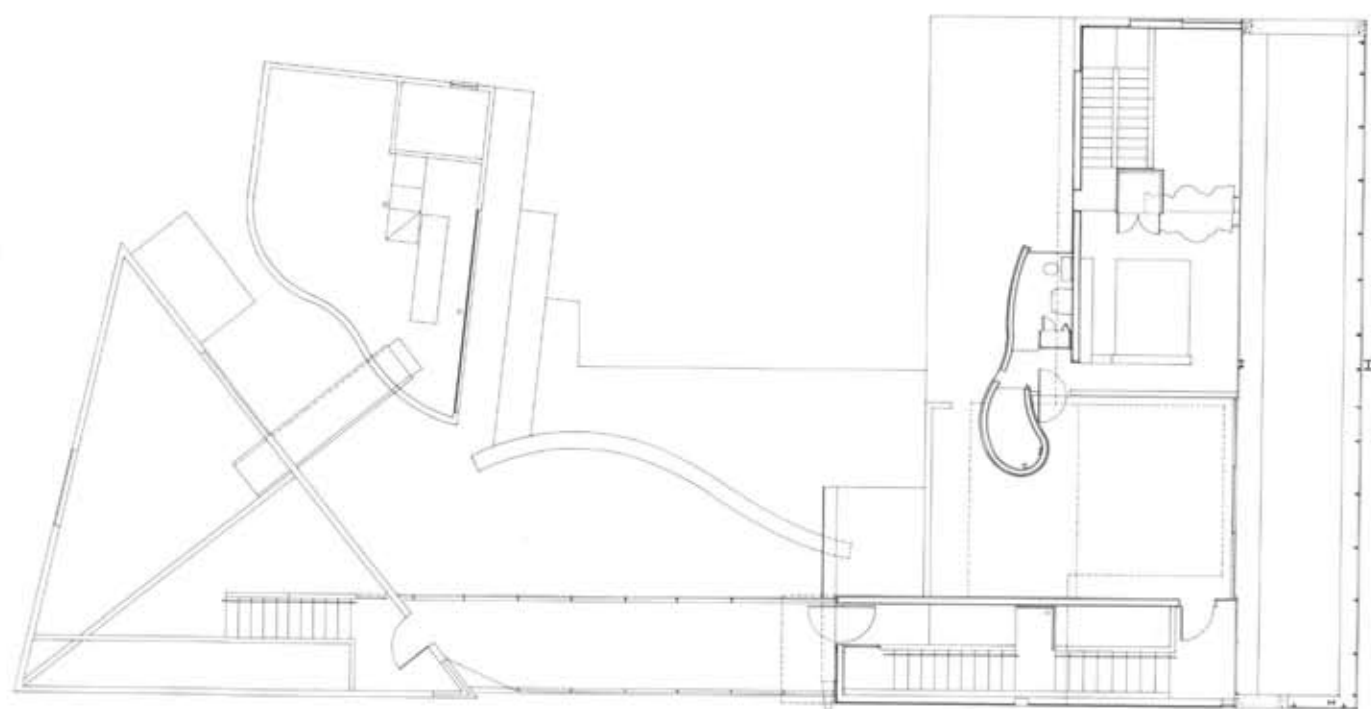


**FACING PAGE:** View of pool and master bedroom looking west





North-south section



Upper-level plan



RIGHT: South elevation from street  
FACING PAGE: View of pool at dusk

