

G+A

Global Architecture

HOUSES



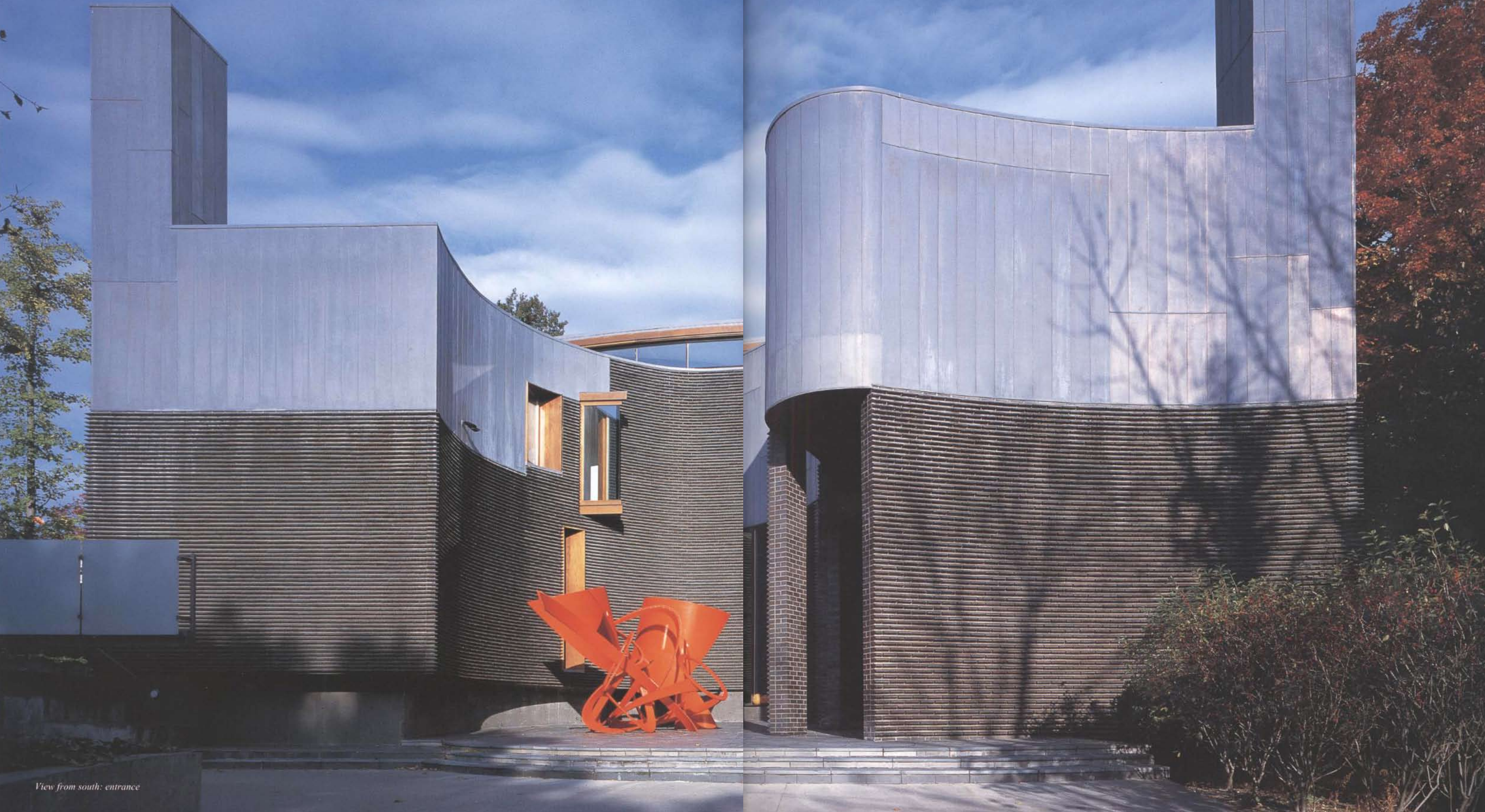
69

SCOGIN ELAM AND BRAY

A HOUSE IN BROOKLINE

*Brookline, Massachusetts, U.S.A.
Design: 1994–95 Construction: 1996–99*

Photos: T. Sakashita



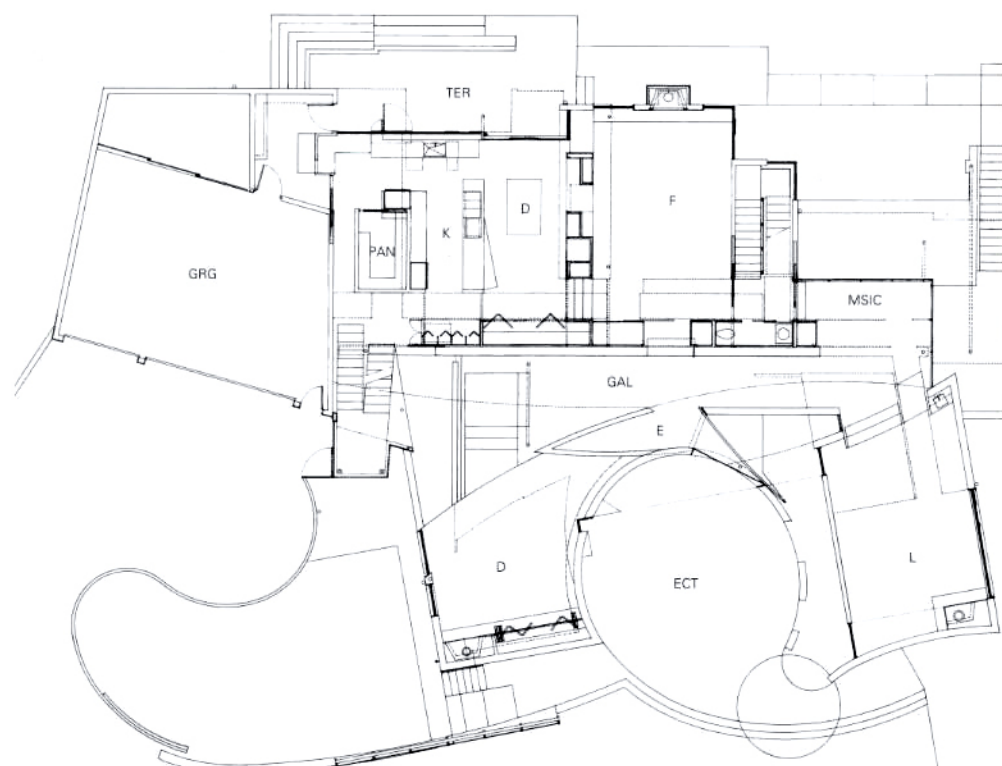
View from south: entrance

The quintessential suburban house: a home for a family with three children. Set into a gently sloping leftover suburban lot in a quiet upper income neighborhood, it is at once a repository of tradition and a vehicle for innovation. Disciplined, subtle, restrained, it respects but holds its own amidst its Neo-Georgian, colonial and mock-Colonial neighbors.

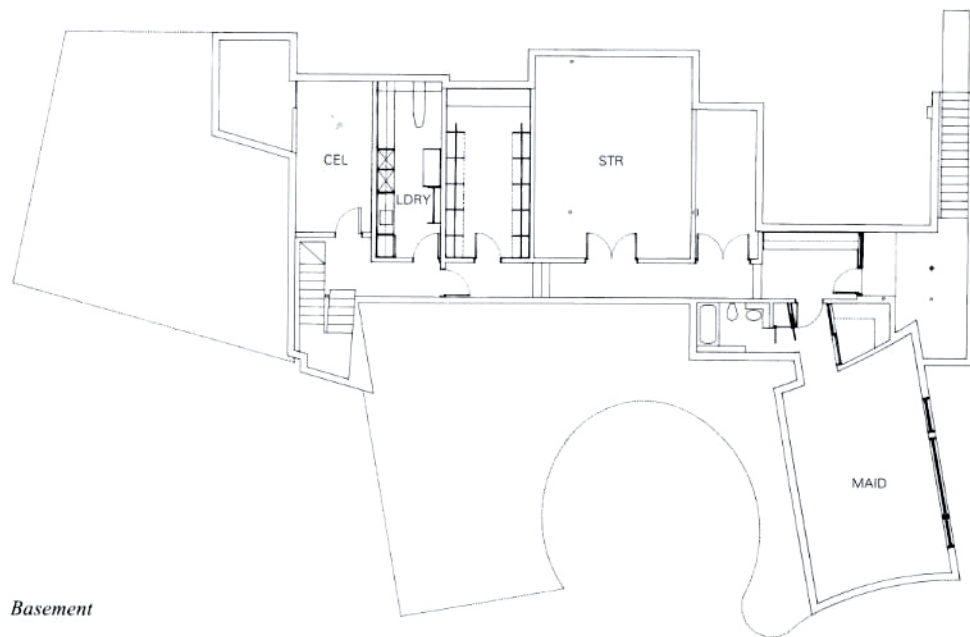
It is a house of contrasting facades. To the street, a formal, somewhat serious face is tempered with gently undulating curves that form an entry courtyard flanked by nearly symmetrical, slightly offset pavilions. These house the formal entertaining and living spaces in clearly defined, generously proportioned rooms. The impact of the three car garage is minimized by its divergent angle and serpentine approach. In contrast, the open and idiosyncratic rear facade belies a shift from the formal spatial order of the front to a utilitarian, open-plan organization that accommodates the overlapping rituals of everyday family life, challenging ideas of closure and fixed space.

The plan is anchored and organized around a transverse, two-story wall that functions as the house's central unifying element, both inviting and filtering communication between front and back, formal and informal, and public and private, thus creating an interplay of contrasting geometries and spaces. The wall is reinforced on one side by a two-story entrance gallery accommodating a growing art collection and on the other by a horizontal, bi-level circulation spine along which the private family living spaces are arranged.

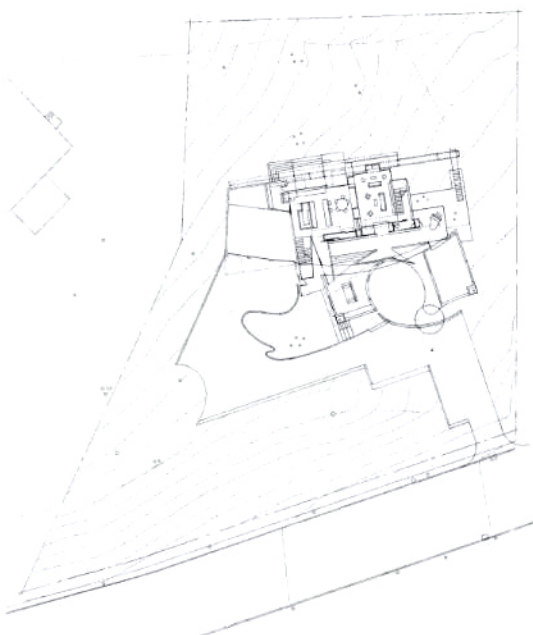
The house, like the family it houses, presents itself both as a homogeneous whole, and as an assemblage of distinct, unmistakably unique parts.



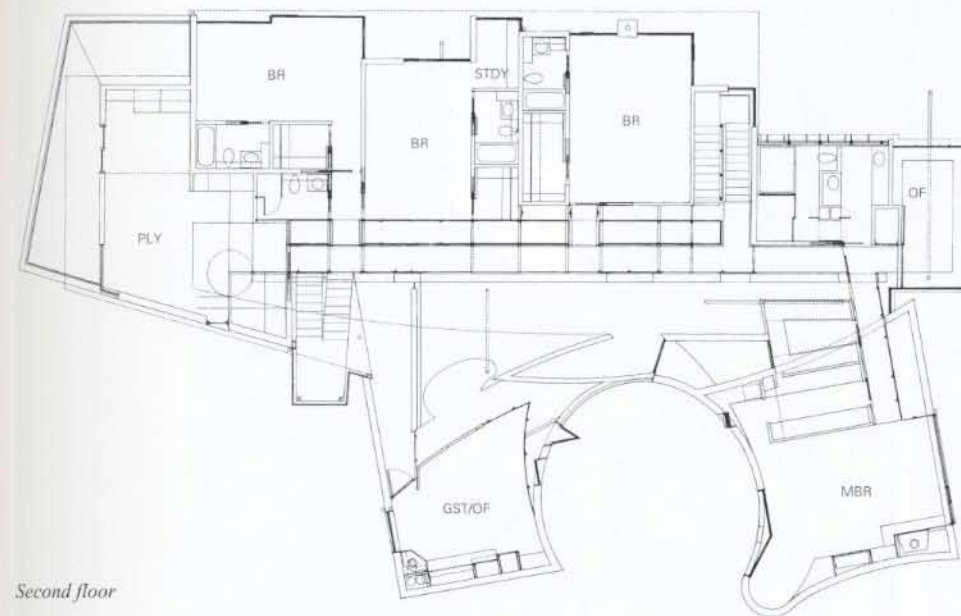
Ground floor



Basement



Site plan



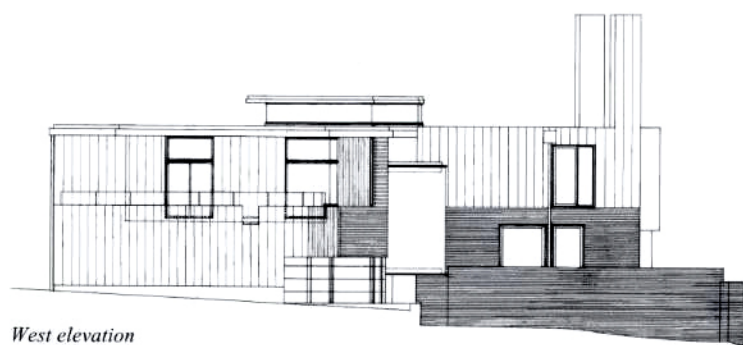
Second floor



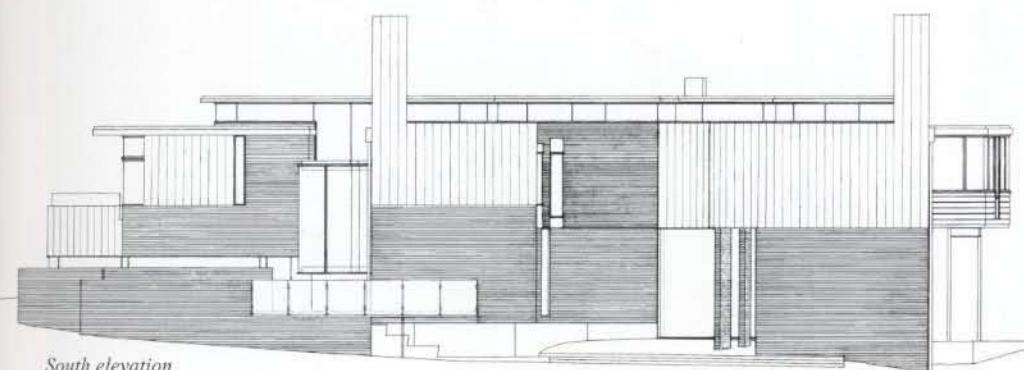
East elevation



North elevation



West elevation



South elevation

典型的な郊外住宅。3人の子供がいる一家のための家。高所得者層の住む静かな住宅街の一角に残っていた緩斜面の敷地に据えられた建物は、伝統的收藏庫であると同時に革新的な表現媒体でもある。秩序、繊細さ、節度を尊重しながらも、ネオ・ジョージアン、コロニアル、擬コロニアル様式などから成る住宅群の直中であって独自の性格を保っている。

対照的なファサード構成を持つ家である。道路側では、折り目正しくどこか生真面目な構成を、緩やかに波打つ曲面が和らげている。この曲面は、ほぼ対称に、僅かなずれを持たせて配置された2つのパビリオンに挟まれたエントリー・コート形成する。パビリオンには、フォーマルな食堂と居間があり、二つは明快に分けられ、十分な広さがある。3台入るガレージの華やかな感じは、主屋に対し分岐して置かれた角度と、蛇行するアプローチによって抑えられている。対照的に、開放的で個性豊かな背面は、整った空間的秩序を持つ正面に反逆し、閉ざされ固定した空間という考えに挑戦しながら、様々に重なり合う日々の生活に対応する、実用性を重んじた、オープン・プランへ転換する。

平面は、家全体をまとめる中心的な役割を持つ、内部空間を横断して行く2層の高さの壁の周りに編成されている。壁は、正面と背面、フォーマルとインフォーマル、パブリックとプライベート間の交流を調節しながら誘導し、対比的な幾何学形態と空間の交錯をつくりだす。壁はまた、片側の、増え続ける美術コレクションを納める2層吹抜けのエントランス・ギャラリー、反対側の、水平に広がる2層のメイン・サーキュレーションによって強化される。このサーキュレーションに沿って私的な住空間が並ぶ。

この家には、そこに住む家族のように、同質であると同時に、異質な、それぞれ個性を持つものの集合体であることが表現されている。

Architects: Mack Scogin Merrill Elam Architects (formerly Scogin Elam and Bray Architects)—Mack Scogin and Merrill Elam with Lloyd Bray, principals-in-charge; Jeff Atwood, Ned Frazer, Kathy Wright, Kevin Cannon, Dustin Lindblad, Allison Reeves, Beth Morris, Denise Dumais, David Yocum, Tim Harrison, and Christopher Agosta, project team
Consultants: Palmer Engineering Company, structural; Samiotes Consultants, Inc., civil engineer; Ramon Luminance Design, lighting consultant; Michael Van Valkenburgh Associates, landscape
General contractor: Dynamic North Construction
Major Materials: slate pavers, lead coated copper siding, mahogany trim and windows, Endicott brick (custom shape)
Built area: 8,500 sq.ft.



Entrance



Glazed staircase: garage on left



View from northeast



North elevation: living room on left

Gallery ▷



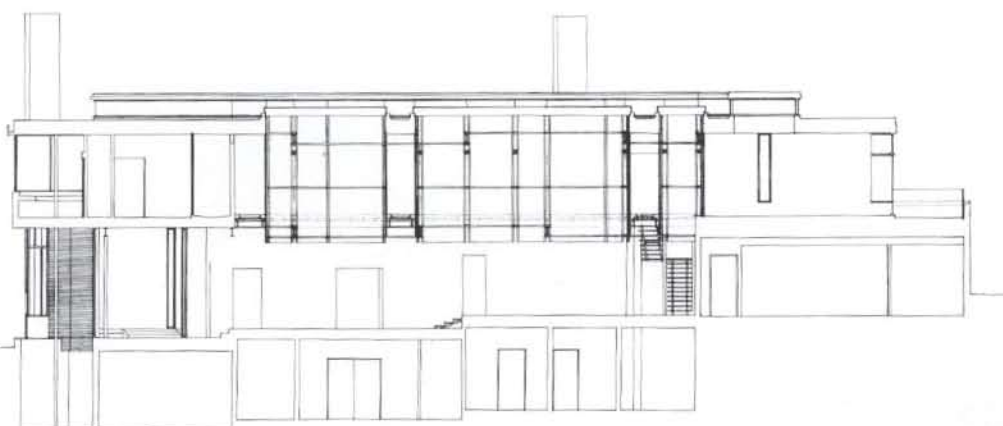


◀ View from living room toward family room/ kitchen

Dining room on south △



Dining room: view toward gallery on north



East-west section



Living room



Dining room



North-south section



Staircase on west



Staircase: detail



Family room



View toward music room: "light box" above



Family room



Detail of "light box"



◀ *Staircase: second floor*

Family room: view toward north



Staircase on east △▷



Corridor: view toward master bedroom



"Light box"



Corridor on second floor: bedrooms on right



"Light box"