

THE NEW AMERICAN HOUSE 4

**Innovations in Residential Design
and Construction**

**Edited by
JAMES GRAYSON TRULOVE
and IL KIM**



House in Brookline 2000
MACK SCOGIN MERRILL ELAM
ARCHITECTS

Owners: Withheld
Architects: Mack Scogin Merrill Elam Architects, Inc., Atlanta, Georgia (formerly Scogin Elam and Bray)
Design Team: Mack Scogin and Merrill Elam with Lloyd Bray (principals), Jeff Atwood, Ned Frazer, Kathy Wright, Kevin Cannon, Dustin Lindblad, Allison Reeves, Beth Morris, Denise Dumais, David Yocum, Tim Harrison, Christopher Agosta (project team)
Engineer: Palmer Engineering Company (structural), Samiotes Consultants, Inc. (civil), Keady Electrical Contractors (electrical)
Landscape Architect: Michael Van Valkenburgh Associates
General Contractor: Damon Coons, Dynamic North Construction
Consultants: Ramon Luminance Design (lighting), MHL (security and sound), Aspinwall Plumbing and Heating Company (heating and plumbing), Quinn Brothers of Essex (steel), Public Phone Stores (telephone system), Cliftondale Woodworking (cabinetry), Baystate Window Coverings, Soft Walls Associates (leather), Willston Weaves (carpet)
Photography: Timothy Hursley

Location: Brookline, Massachusetts
Program: Dining room, living room, gallery, music room, family room/den, kitchen/eating area, 3-car garage, master bedroom, 3 bedrooms, 4 bathrooms, 2 powder rooms, master bathroom, office, guest room, wine cellar, laundry, cedar closet, nanny's quarters, storage
Square Footage: 8500
Structural System: Wood and steel frame
Mechanical System: Radiant heat floor system, forced air cooling
Major Exterior Materials: Slate pavers, lead-coated copper siding, mahogany trim and windows, Endicott brick (custom shaped), black concrete
Major Interior Materials: Unpainted plaster walls, mahogany trim, cherry and slate (floors)
Furnishings and Storage: California Closets, Montage, Boston, Domus, Ron Witherspoon (fabrication of dining room light fixture)
Doors and Hardware: Custom cast bronze door handles (fabricated by Motheius)
Windows: Custom
Cost: Withheld at owners' request

Site

The site is a gently sloping leftover suburban lot in a quiet, upper-income neighborhood consisting of Neo-Georgian, colonial, and mock-colonial houses.

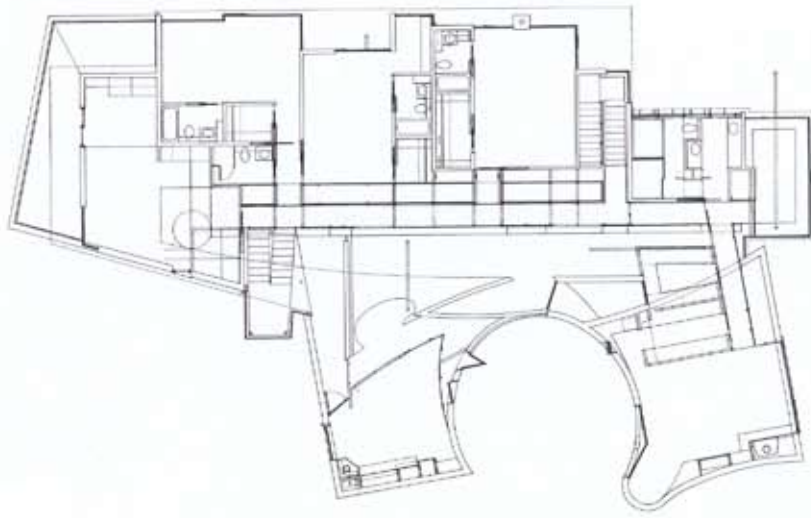
Design

This is a house of contrasting façades. From the street, the house displays a formal, somewhat serious face tempered with gently undulating curves that form an entry courtyard flanked by nearly symmetrical, slightly offset pavilions. These pavilions contain the formal entertaining and living spaces in clearly defined, generously proportioned rooms.

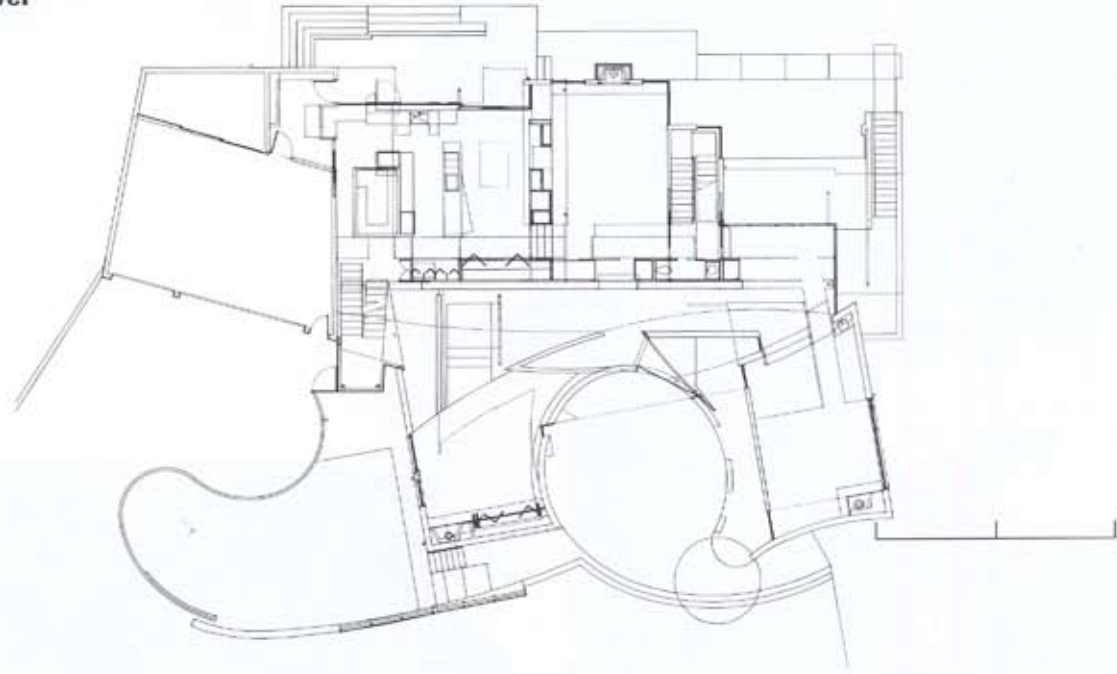


ABOVE: View of sculpture court from entry
FACING PAGE: South elevation

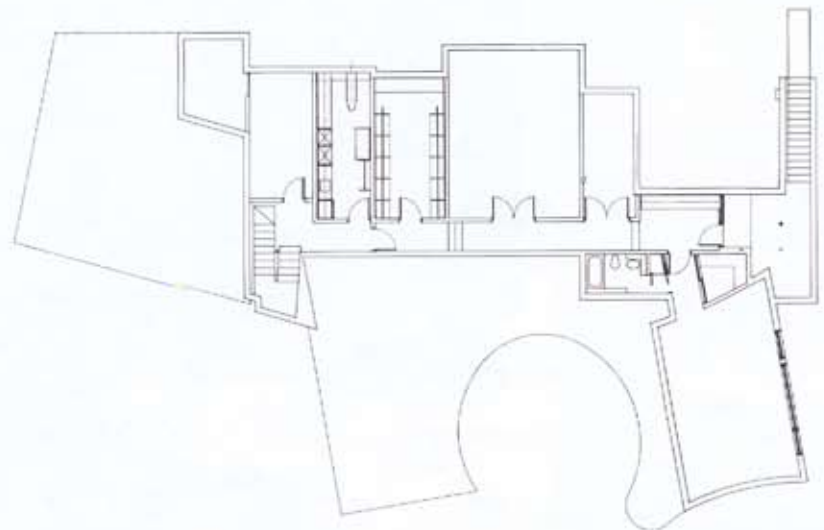
Upper level



Lower level



Basement level



The impact of the garage is minimized by its divergent angle and the serpentine approach to it. In contrast, behind the open and idiosyncratic rear façade is a utilitarian, open-plan organization that accommodates the overlapping rituals of everyday family life.

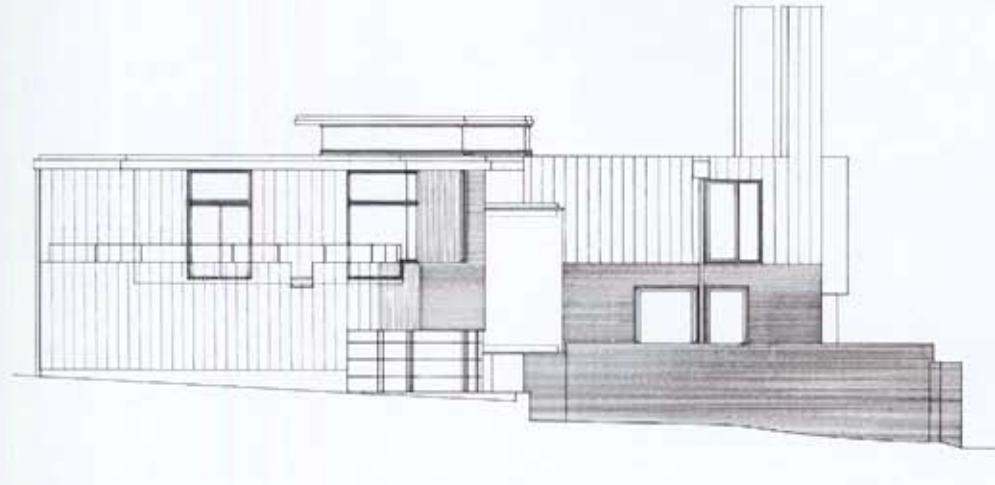
The entire plan is anchored and organized around a transverse, two-story wall that functions as the house's central unifying element, both inviting and filtering communication between front and back, formal and informal, public and private spaces. On one side of the wall is a two-story entrance gallery and on the other, a horizontal, bi-level circulation spine along which the private family living spaces are arranged.

Construction

Standard wood and steel framing was used.

Site plan

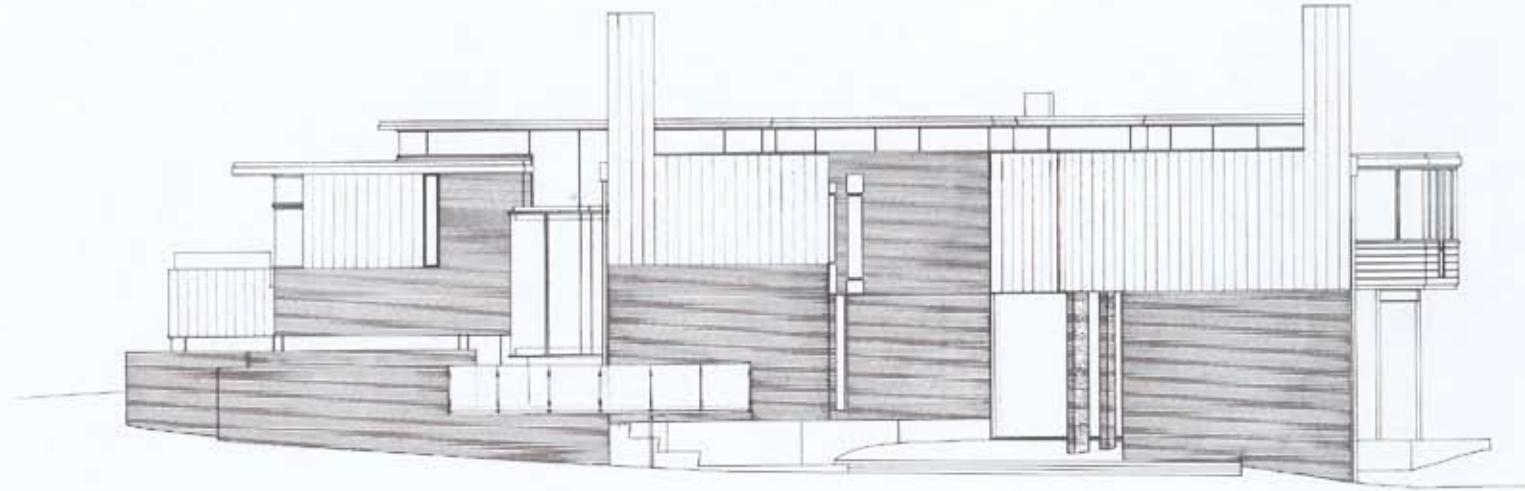
West elevation



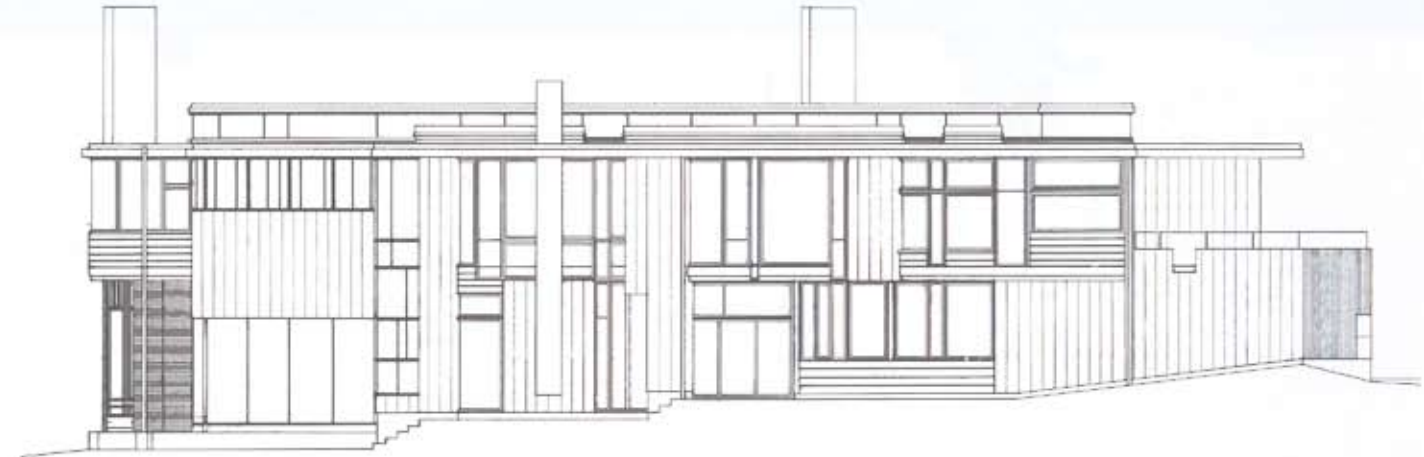
East elevation



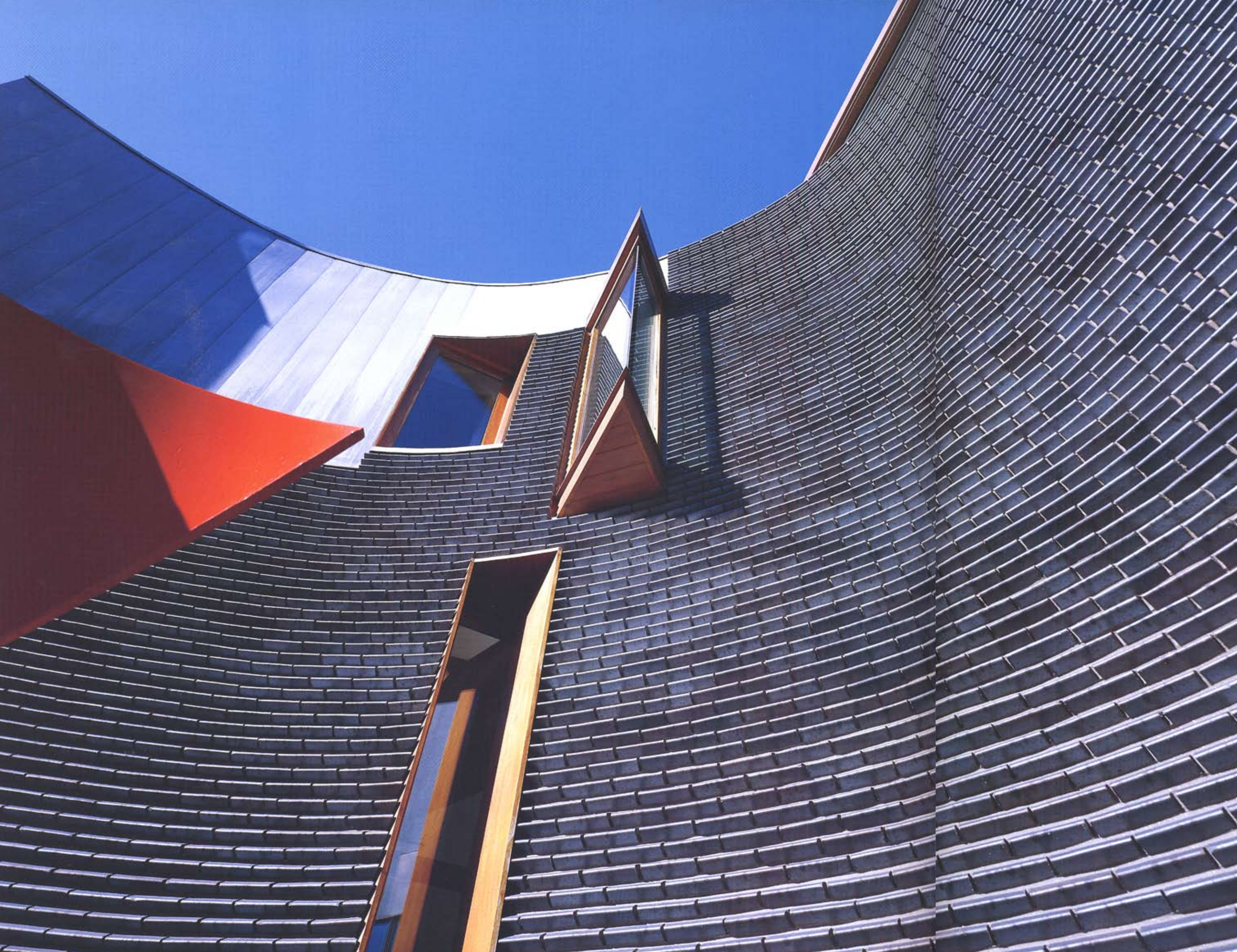
South elevation



North elevation







ABOVE: View from southwest
LEFT: View toward stairs to walled garden
FACING PAGE: Detail of lead-coated copper siding and custom Endicott brick siding



*ABOVE LEFT: View from entry
and gallery to dining room steps
ABOVE: View of gallery from
dining room steps
FACING PAGE: Dining room with
guest/office above*



RIGHT: View of walled garden
from stair landing
BELOW RIGHT: View from landing
to second floor
FACING PAGE: Living room
FOLLOWING PAGES: Second-floor
corridor with light box on right







LEFT: View of second-floor corridor and light box from below
FACING PAGE: View of master bedroom looking east

