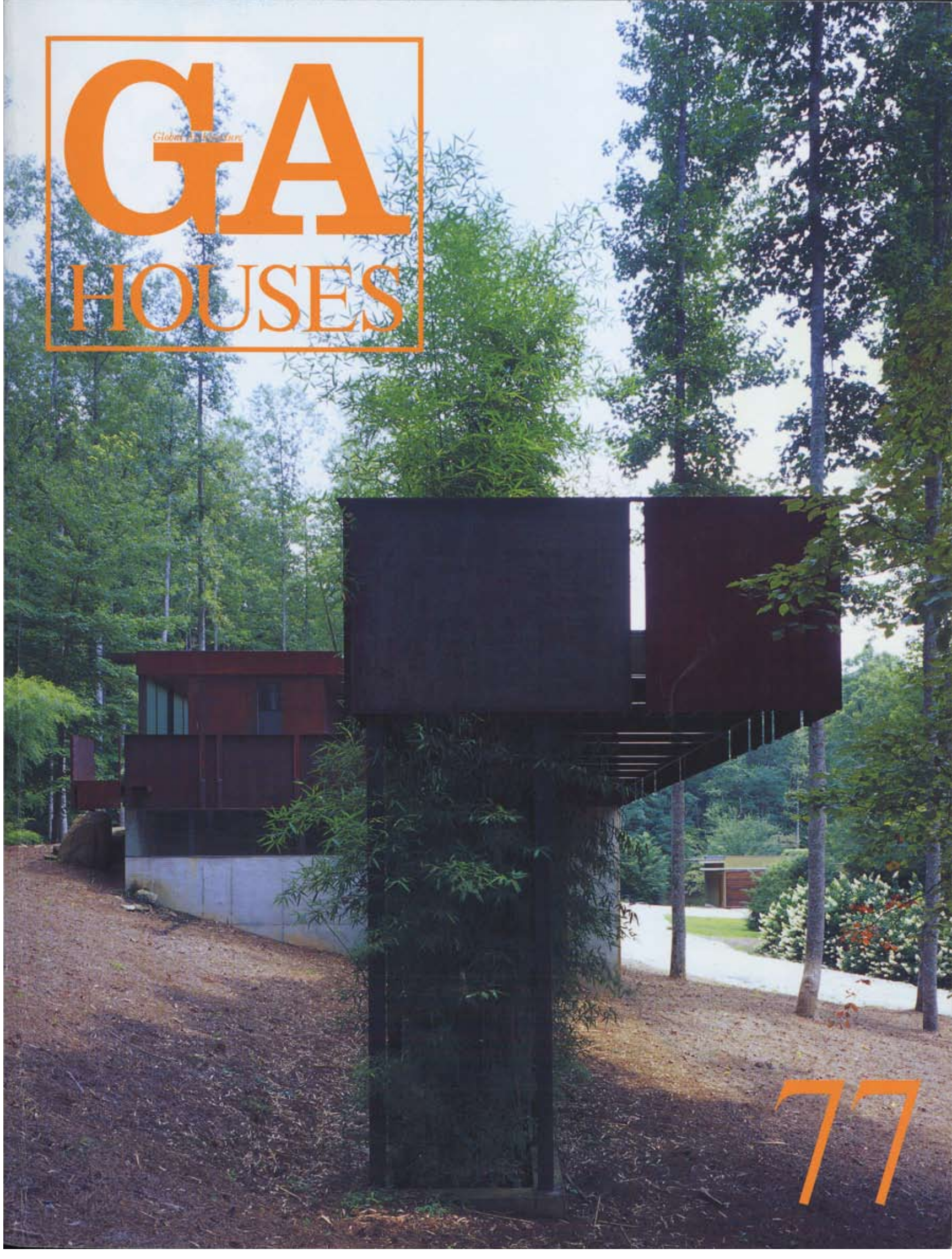


GA

Globetrotters

HOUSES



MACK SCOGIN MERRILL ELAM

MOUNTAIN TREE HOUSE

Dillard, Georgia, U.S.A.

Design: 1998–2000 Construction: 2000–01

Photos: Yoshio F.

The Mountain House was built five years prior. It is an inside-outside place. Half screened porch and outdoor courtyards, half inside house and glass walls. Set for gardening and reading, it is a weekend retreat into the vertical poplar trunks among the foothills of the Appalachian

Mountains.

But now the family has grown with grandchildren and friends, and a little more space is needed for things like tractors and dogs. The new project is a concrete garage, a steel bedroom and a bamboo deck. It, too, is an inside-

outside thing, but also an up-down and heavy-light thing.

The garage is for working and gardening, the storage of tools and the occasional car. It is walled by unfinished concrete, with plain doors and long windows. The bedroom above is can-

clevered over the work-yard, as open with glass walls as the garage is closed below. The little bathroom is solid, clad in steel. The walls swing wide open for outdoor showers and spring-cleaning. The bamboo starts in planters on the ground and grows up through narrow slots in

the deck above. The space is for sitting and viewing, in and among the fast growing canes. The structure is wood and steel framing atop reinforced concrete walls. Deck surface and interior flooring is black slate. The ramp and handrails are self-weathering steel. Panels of the

same steel, lap-jointed and welded, clad the upper room. Glass walls are either clear tempered or translucent laminated.

View from southeast



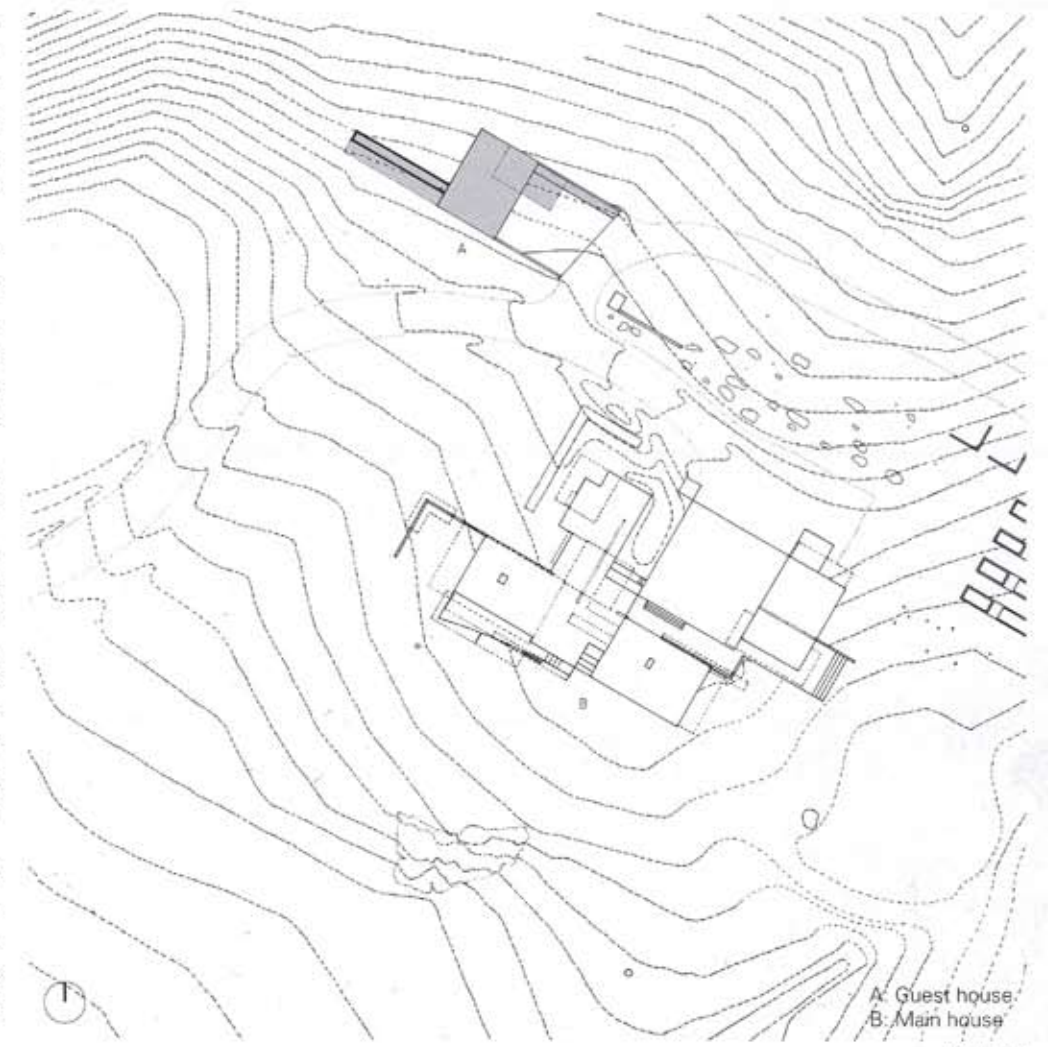
Main house(left) and new guest house(right)

最初の家、マウンテン・ハウスが建てられたのは5年前。内と外という考えに基づいて、半分がスクリーンを巡らしたポーチと屋外コートヤード、半分がガラス壁に囲まれた屋内空間で構成されている。園芸と読書を楽しむために計画された週末の別荘で、アパラチア山系の丘陵地帯に広がる垂直のポプラの幹に囲まれている。

ところが今や、一家には孫や友人が加わり、トラクターや犬などのために、もう少し部屋が必要となった。そんなわけで、コンクリート造のガレージ、鉄骨造の寝室、竹に囲まれたデッキを新たにつくることになった。こちらも内と外という考えに関わるものだが、さらには上と下、軽さと重さという対比も加わっている。

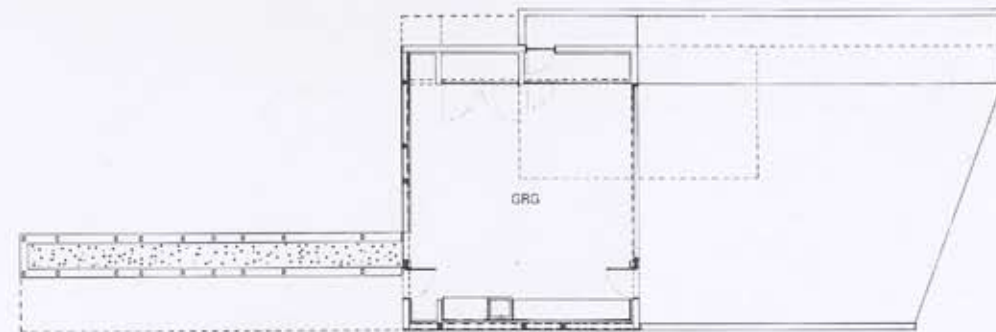
ガレージは各種作業や園芸のための場所、道具置き場、そして時に車の収納場所となる。打放しコンクリート壁に簡素なドアと細長い窓が開いている。上の寝室はワーク・ヤードの上に片持ちで突き出し、下のガレージが閉鎖的であるのに対し、ガラス壁に囲まれ開放的である。小さな浴室には窓がなく、スチールで包まれている。壁を回転させると屋外にあるシャワーと物干しに開く。地面に置いた植木鉢の竹が、上方にかぶさるデッキの細い隙間を抜けて伸びていく。デッキは、成長の早い竹などの茎植物に囲まれた、座ってくつろぎ、眺めを楽しむ場所である。

構造体は鉄筋コンクリート壁の上に木と鉄骨の枠組構造を重ねている。デッキと内部の床は黒のスレート。ランプと手摺りは耐候性鋼。同じ耐候性鋼のパネルは、重ね継ぎ手と溶接により上階の部屋を被覆。ガラス壁には透明な焼き戻しガラスと半透明の合わせガラスを併用。



A: Guest house
B: Main house

Site plan

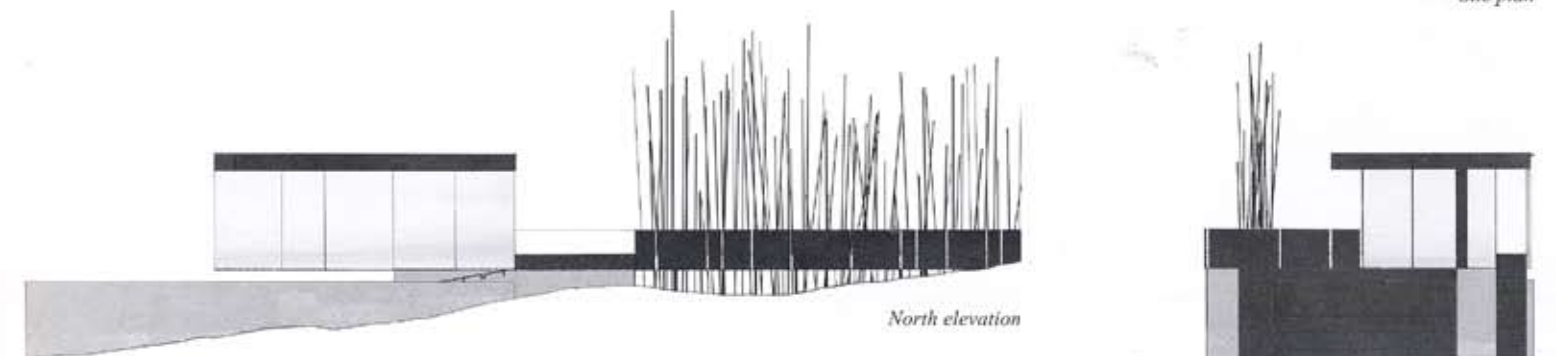


Garage level



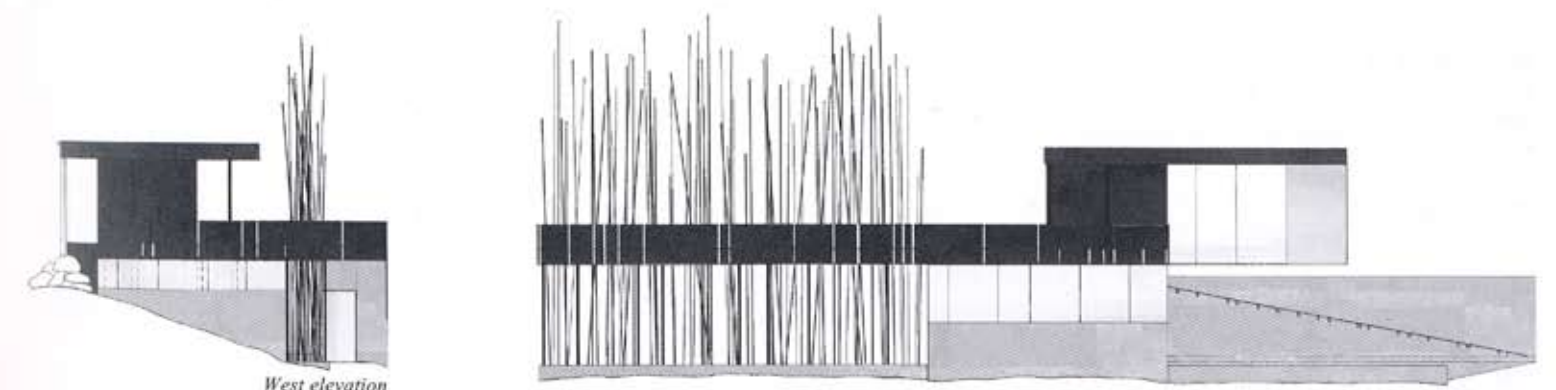
Bedroom and deck level

Architects: Mack Scogin Merrill Elam Architects—Mack Scogin, Merrill Elam, principals-in-charge; David Yocum, Penn Ruderman, Denise Dumais, project team
Consultants: Palmer Engineering, Tucker, Georgia—Chris DeBlois, Bianca Roberts, structural; Ramón Noya, Ramón Luminance Design, lighting; Marchant Martin, landscape; Winfred and Warren McKay
General contractor: Winfred and Warren McKay, Dillard, Georgia
Structural system: cast-in-place concrete, weathering steel, wood framing
Built area: 1,000 sq.ft. (enclosed), 1,000 sq.ft. (open deck)



North elevation

East elevation



West elevation

South elevation

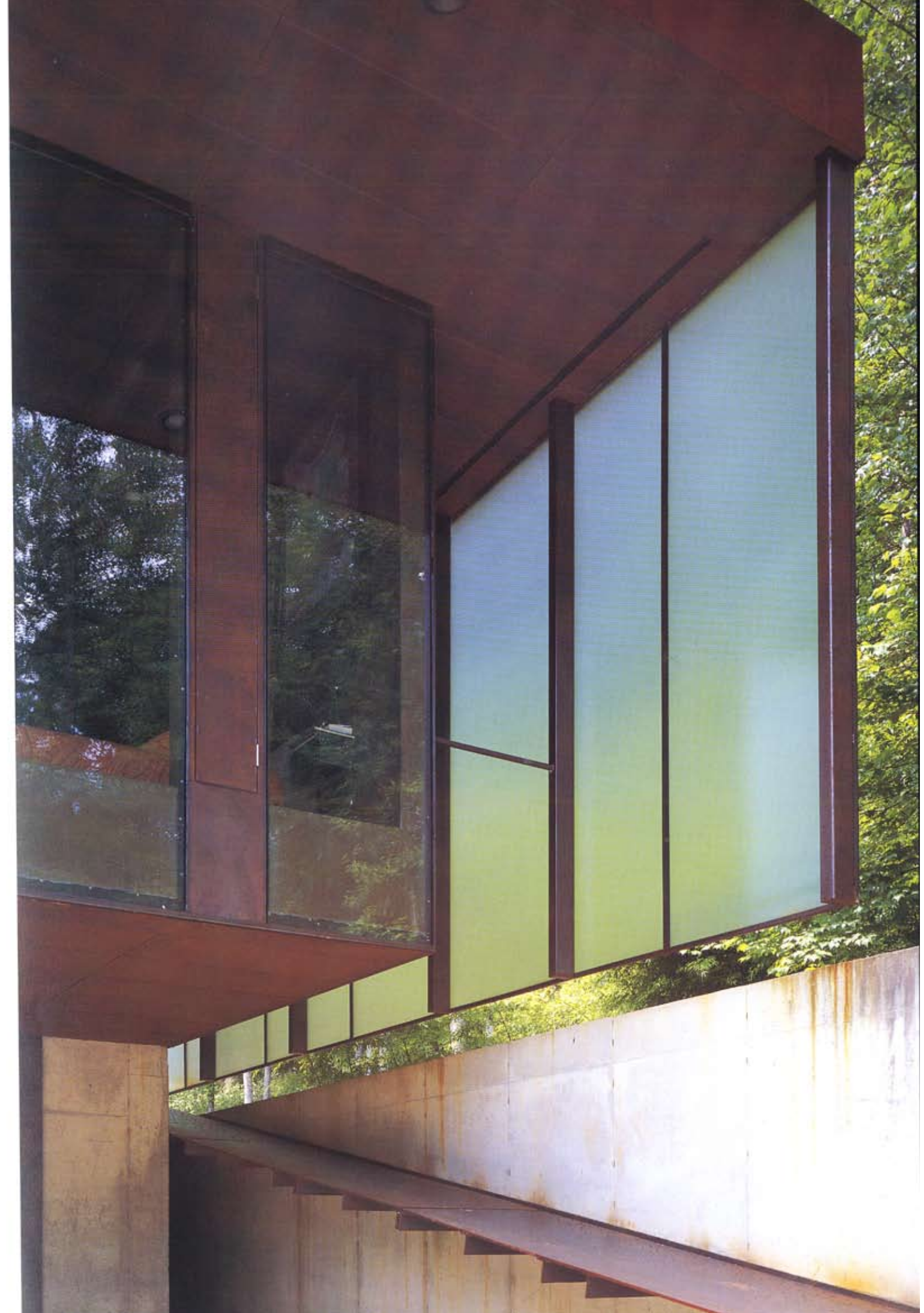


East view: ramp along concrete wall on north leading to deck on west



South view: glass box floating over court below

Detail of northeast corner: self weathering steel, laminated glass and concrete





South elevation: bamboo planted along deck stretched toward west



Northwest corner



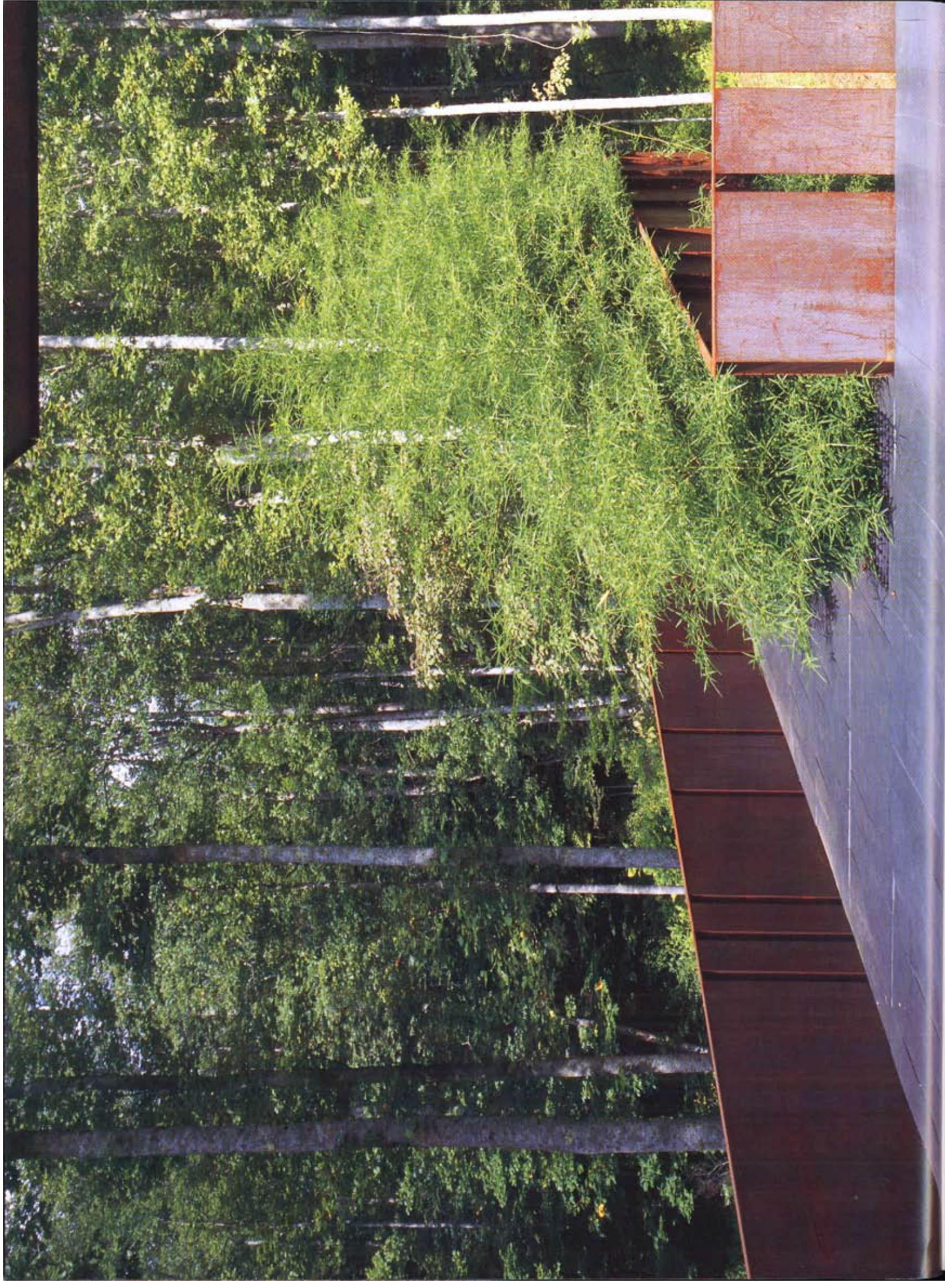
View from northwest: garage below deck having southwest corner window



View of main house



View from west



△Deck covered by black slate

▽View from bedroom





Bedroom: main house on right



View from deck



Bathroom

Northwest corner: entry to bathroom on right

