

The background of the entire image is a complex, multi-layered architectural wireframe. It consists of numerous thin, light-colored lines that form a dense, interconnected network of geometric shapes, including rectangles, triangles, and circles. The lines vary in opacity and thickness, creating a sense of depth and complexity. The overall color palette is a range of greys, from very light to dark, which makes the white text stand out prominently.

THE
PHAIDON
ATLAS

OF CONTEMPORARY
WORLD
ARCHITECTURE

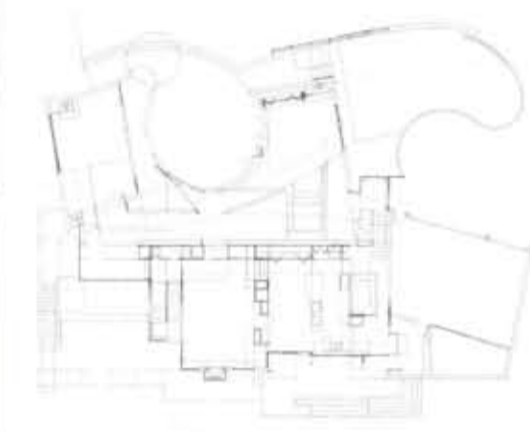
PHAIDON

941	Brookline, Massachusetts, USA	Private House	Mack Scogin Merrill Elam Architects	1999 RES	970 RES Dillard, GA, USA	971 RES Atlanta, GA, USA
942	Boston, Massachusetts, USA	Honan-Aliston Branch of the Boston Public Library	Machado and Silveti Associates	2001 CUL	880 CUL Salt Lake City, UT, USA	943 EDU Boston, MA, USA



941 This house for a family with three children is set into a gently sloping, leftover suburban lot in a quiet neighbourhood, where its restrained aspect contrasts with its Neo-Georgian and mock-Colonial neighbours. This is a house of differing facades. To the street a formal, somewhat serious face is tempered with gently undulating curves that form an entry courtyard. This court is flanked by nearly symmetrical pavilions housing the formal entertaining and living spaces in clearly defined and generously proportioned rooms. In contrast, the open and idiosyncratic rear facade presents a shift from the formal spatial order of the front to a utilitarian, open-plan organization that accommodates the overlapping rituals of everyday life. The plan is anchored around a two-storey wall that functions as the house's central unifying element, both inviting and filtering communication between the front and back, formal and informal, public and private spaces of the house. The wall has a two-storey entrance gallery on one side that accommodates a growing art collection; there is a horizontal two-level circulation spine on the other side along which the private spaces such as bedrooms and bathrooms are arranged.

- 1 The office cantilevers out over the gardens acting as a protective sentry to the master bedroom behind
- 2 View of the entry court
- 3 The double-height entrance hall and art gallery
- 4 Various types of windows in the wall of the entry courtyard bring light into the entrance space
- 5 Ground-floor plan
- 6 East-west section

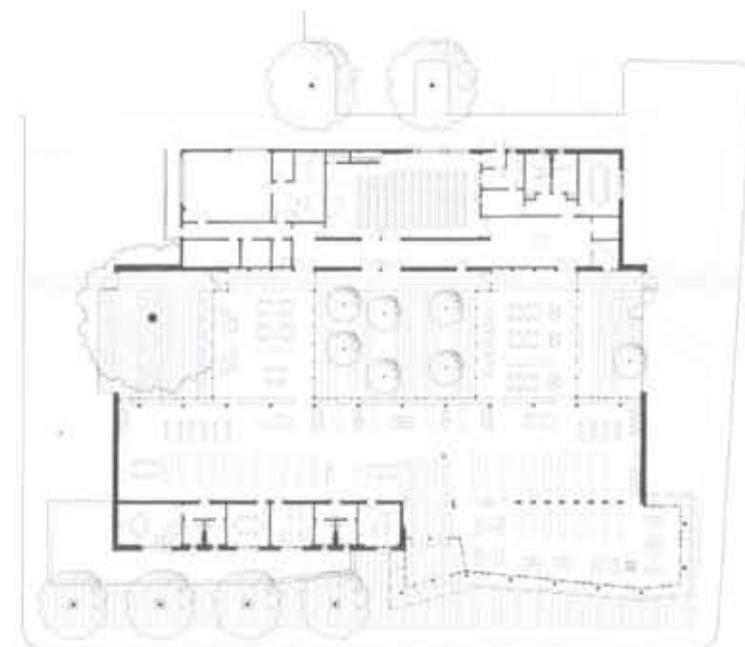


Client
Withhold
Area
790m²/8,500 sq ft
Cost
Confidential



942 The Honan-Aliston branch of Boston Public Library is one of 27 branches which differ from the main facility by offering an important outreach service to the Boston neighbourhoods, often serving as community centres as well as libraries. The site lacked any clear architectural language from which to draw, being bounded by a busy traffic thoroughfare, a development of timber houses and a smattering of one-storey brick warehouses. In this environment, the client wanted to create a library with a central reading garden, a separate entrance for community use, as well as all the necessary library facilities all in a one-storey configuration. In response to these conditions, the scheme is divided into three parallel bands, two solid outer zones and a central void, all aligned with the main street. The front zone contains all the main information gathering functions including the book stacks. The transparent middle zone alternates between gardens and glass pavilion reading rooms. Finally, the third and rear zone contains meeting and ancillary spaces as well as community access. On the exterior, the periodicals reading room is treated as a double-height slate-panelled butterfly form in order to establish a scale and material richness that are commensurate with the institution's importance, as well as continuing the rhythm of neighbouring residential forms.

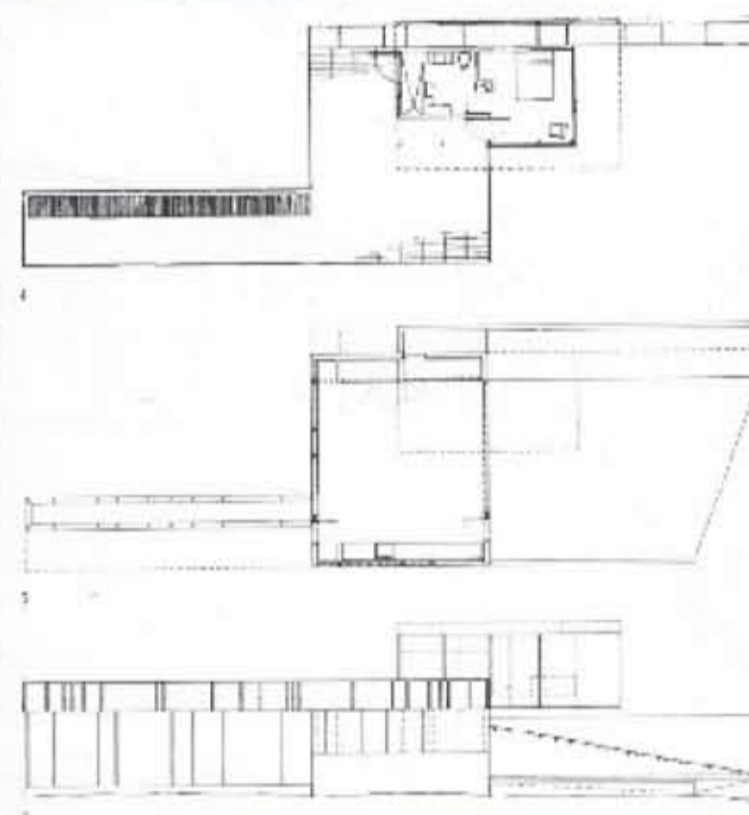
- 1 The facade of Norwegian slate panels dominates the primarily horizontal arrangement of the public facade
- 2 The central court
- 3 Ground-floor plan



Client
City of Boston, Department of Neighborhood Development, Boston Public Library
Area
1,858m²/20,000 sq ft
Cost
US\$6,500,000



970	Dillard, Georgia, USA	Mountain Tree House	Mack Scogin Merrill Elam Architects	2001 RES	941 RES Dillard, GA, USA	971 RES Atlanta, GA, USA	972 CLL Dillard, GA, USA
971	Atlanta, Georgia, USA	54 Wakefield	Mack Scogin Merrill Elam Architects	1998 RES	941 RES Dillard, GA, USA	970 RES Dillard, GA, USA	972 CLL Dillard, GA, USA



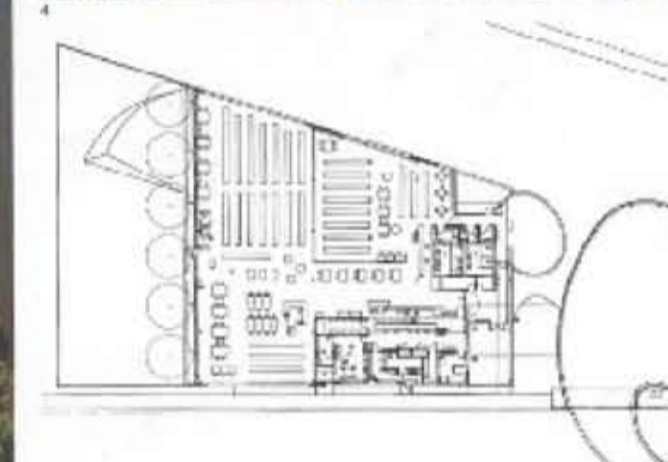
970 In 1996 Mack Scogin and Merrill Elam were commissioned to design and construct a house in the southern Appalachian Mountains in Georgia. Following the expansion of the clients' family, they were re-commissioned to create a weekend retreat for gardening and reading. Combining a concrete garage, a pool, bedroom and a bamboo deck, this tiny building is intended to be a place for sitting and relaxing, and for enjoying the natural environment. The garage is used for working, gardening, tool storage and the occasional car and a concrete slab of unfinished concrete, with pain doors and long windows. The bedroom above cantilevers over the garden, contrasting in its glassy lightness with the solidity of the garage. Inside, the little bathroom is clad in metal with walls that swing open to allow for outdoor showers and spring cleaning. Also on the upper floor, a long, thin, slide-covered terrace breaks away from the main form of the house, hovering over bamboo plants that grow up through a narrow slot in the deck.

- 1 The elongated bamboo terrace stretches away from the house into the forest; a slot cut into the floor allows the bamboo to grow up through it.
- 2 Two solid surfaces – the rear wall and the roof – result into the lightness of the ground bedroom box.
- 3 The slide-covered deck leading out into the forest.
- 4 Upper-floor plan.
- 5 Lower-floor plan.
- 6 Elevation.

Client
Withheld
Area
100m²/12,000 sq ft
Cost
Confidential



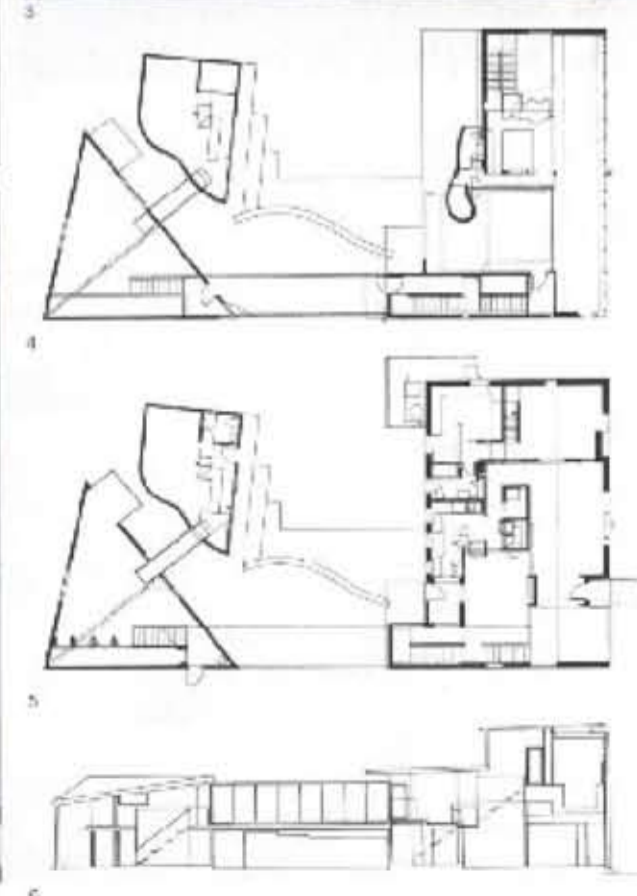
972	Riverdale, Georgia, USA	Lee B Philmon Branch Library	Mack Scogin Merrill Elam Architects	1995 CUL	944 REC Dillard, GA, USA	970 REC Dillard, GA, USA	971 REC Atlanta, GA, USA
973	Hale County, Alabama, USA	Mason's Bend Community Centre	Rural Studio	2000 PUB	974 REC Perry County, AL, USA	975 REC Hale County, AL, USA	



972 The library sits on a triangular site amongst sprawling suburbs. In the future, there will be a petrol station and convenience store to the north, and a shopping centre to the west. To the south and east is a long-promised new park. Not unlike the nearby Wal-Mart or the Living Waters Assembly of God, the library has thin walls and flat facades, though white its roof bays announce themselves with bold signage, the library contoured the easy read. The interior is bathed in daylight which is filtered by giant pinnac-shaped windows. The tapered geometry of the facade glazing mirrors the slope of the roof trusses inside. The trusses, which give shape to the ceiling, are installed with alternating slopes to provide an undulating play of space. The supply of daylight is further enhanced by skylights at the top of each column. Artificial up-lighting is thrown from 12-metre (40-foot) steel fixtures and bounces off the many inclined planes. The combination of natural and artificial light provides well-dispersed illumination for browsing and reading. Most functions of the library, including adult stacks, children's collections, reading and study tables, computers, a reference area, projection and a staff lounge, are located under the responsive truss-like ceiling. The barrel-shaped public meeting room to the south and the outdoor reading garden to the north appear as solid masses outside the building.

- 1 The conical public meeting room terminates the building to the south.
- 2 The main entrance with covered walkway.
- 3 Large pinnac-shaped windows reflect the alternating orientation of the roof trusses.
- 4 The shifting planes of the roof above the stacks.
- 5 Ground-floor plan.

Client
Clayton County Library System
Area
12,030m²/129,120 sq ft
Cost
US\$1,300,000



971 When Hurricane Opal flooded through Atlanta in October 1995, leveling trees and wrecking havoc, a water tank two metres (seven feet) in diameter, one of the grand remnants of the neighbourhood, smashed through a brick house on this site from roof beam to foundations, provoking a major reconsideration of the premises. The site is small, with a shared driveway, and faces south across the street toward the neighbourhood park, swimming pool and tennis courts in the valley, and a nature reserve on the hill beyond. The client and architect, husband-and-wife team Mack Scogin and Merrill Elam, decided to take the opportunity presented by the hurricane's destruction to use the area of a tip (not to drive the new design). However, only the width of the site at 21 metres (70 feet) afforded the length necessary for the pool. As a result of this constraint the pool, constructed of poured-in-place reinforced concrete with a plaster lining, was elevated to the second floor, spanning the spaces of the floor below and gathering in light from the south. Sliticed from the street by a translucent glass wall but open to the sky and air, the roof deck and pool challenge the very notions of public and private space.

- 1 South elevator.
- 2 Translucent glazing shields the pool and adds privacy to the upper rooms.
- 3 Interior.
- 4 First-floor plan.
- 5 Ground-floor plan.
- 6 Section.

Client
Mack Scogin and Merrill Elam
Area
3,690m²/39,882 sq ft
Cost
Confidential



973 The Rural Studio at Auburn University designs and builds one community project every year in rural Alabama, one of the poorest regions of the USA, where 40 per cent of the inhabitants live for below the poverty line. Rural Studio projects require students to be resourceful and use ingenious building techniques to construct their projects with whatever materials can be found, recycled or donated in an adaptive

encourage students to be socially responsible. Mason's Bend Community Centre is on a dusty, unpaved road lined with shanties and caravans. The open-air pavilion serves as a chapel, meeting hall and playground, and a local stop for the mobile library and health services. Its major initial rammed-earth walls are the colour of the dirt road and it is surrounded by a soaring folded metal and glass canopy. The atmosphere

local materials and is labour-intensive to build; community members worked alongside students in the construction process. The 80 cascading glass panels in the roof are, in fact, car windscreens recycled from a scrapyard in Chicago. The result is an inventive building, one to the ground yet light and airy, blending perfectly with its setting and providing the rural community of Mason's Bend with a much

- 1 The canopy is constructed from car windscreens.
- 2 The fragile plan and unusual materials make this building a landmark in the area.
- 3 The building's rammed-earth walls taper to a point at one end.
- 4 The open interior underneath the glass and metal canopy.

Client
Ora Lee Harris and Anderson Harris
Area
Not available
Cost
US\$30,000