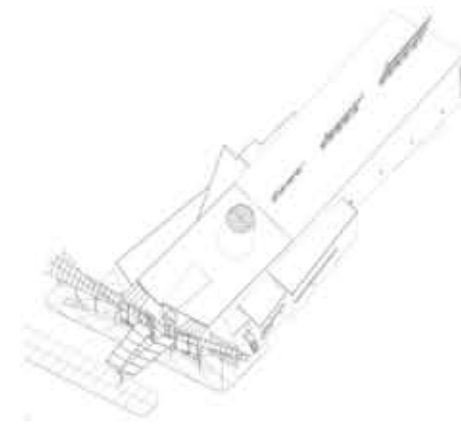


MOD
ERNARCH
ITECTURE

ED. PETER GÖSSEL

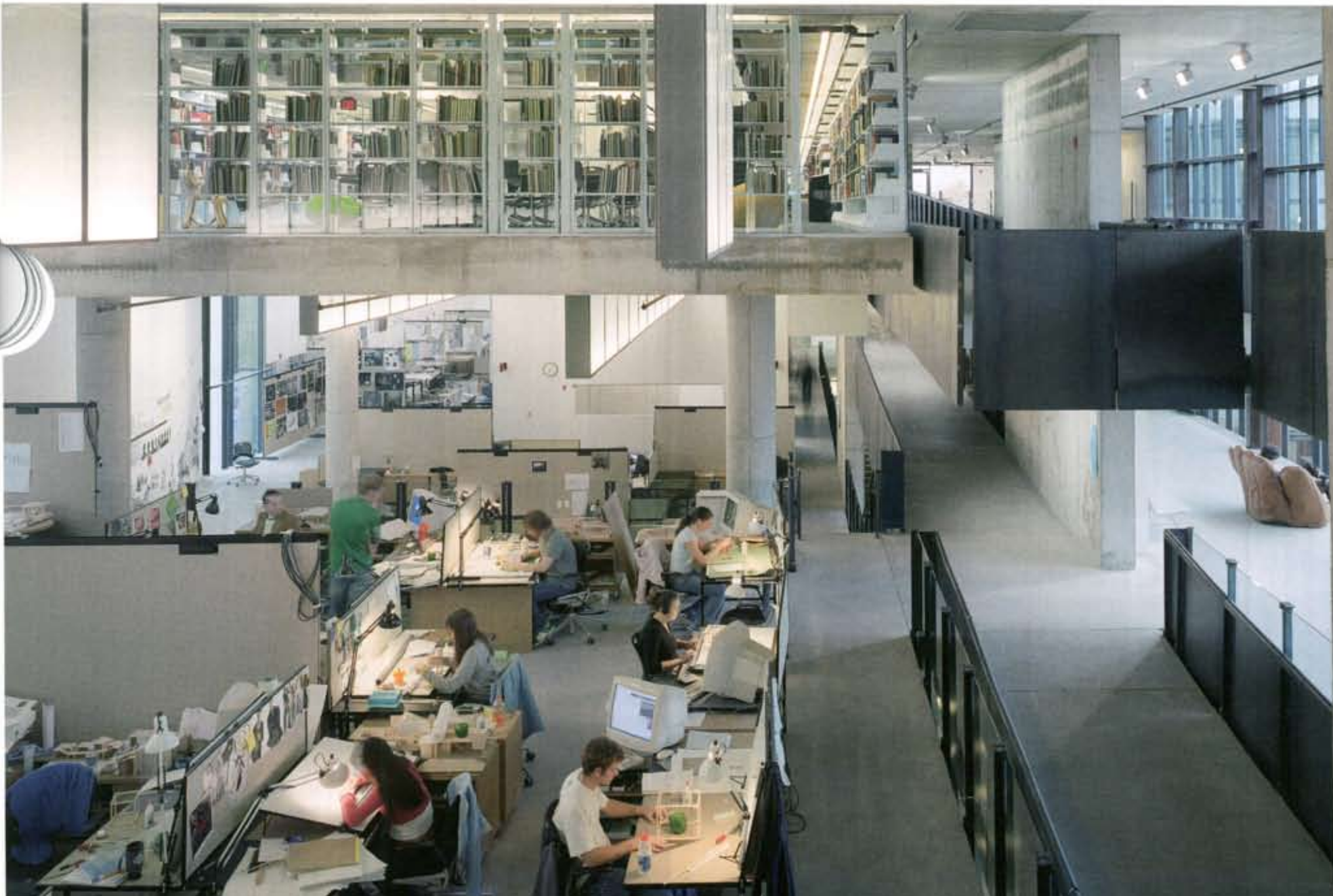
TASCHEN



"Transcending the basics, touching on the extraordinary, allowing the idea of the artful to enter the process, weighing the specific against the generic, pushing the edges, relishing the challenge of 'now' conditions, recognizing cultural forces and influences, and searching for the broader meanings in architecture are the phenomena of architecture that continue to fascinate us."



Mack Scogin Merrill Elam Architects



- Merrill Elam and Mack Scogin
- Buckhead Branch Library, Atlanta, Georgia, 1989, isometric
- Turner Village, Candler School of Technology, Atlanta, Georgia, 1989
- Clayton County Library, Jonesboro, Georgia, 1988

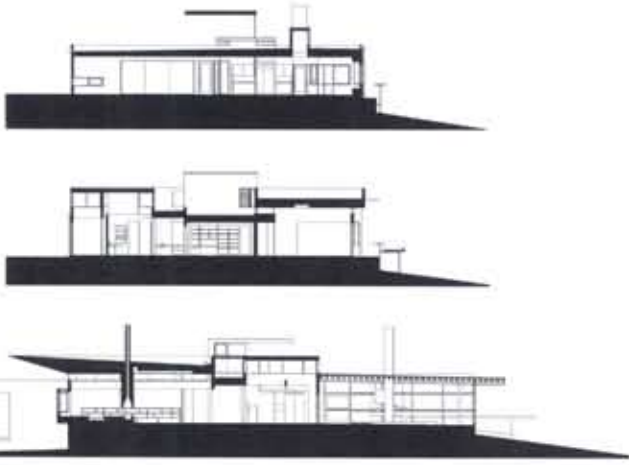


- Buckhead Branch Library, Atlanta, Georgia, 1989
- Chmar House, Atlanta, Georgia, 1989
- Arizona State University, Law Library, Tempe, Arizona, 1993

Mack Scogin (born in 1943) and Merrill Elam (born in 1943) studied at the Georgia Institute of Technology in Atlanta. Their joint practice was established in 1984 with Lloyd Bray (born in 1951). Clayton County Library (1988) was constructed very cost effectively, using mass-produced materials. Corrugated steel façades with an irregular black-and-white pattern attract the eye. The four, stepped roofs fan upwards at an angle resembling the extended wing of a bird, allowing in natural light through window strips below the roof. The 'supermarket' type of aesthetic style is designed to

encourage new visitors across the threshold. Once inside, they will be surprised by the exposed wooden roof construction. The Chmar House in Atlanta, Georgia (1989) consists of two main sections in a T-bar shaped construction, clad in exposed concrete. The building is incorporated into the undulating, wooded landscape, positioned so as to level out any unevenness in the ground as well as gain maximum benefit from the light filtering through the tops of the trees. The middle section looks out onto the surrounding trees through large, wood-framed window areas. There

is an interesting variety of access ways linking interior and exterior; for example, bridges and staircases, rich in detail, and projecting balconies and roofs. The Buckhead Branch Library building in Atlanta, Georgia (1989) is another T-bar shaped design, clad in a façade of slate tiles. The front windows open out onto a view of the city skyline and are fitted with horizontal sun protection elements, which are lit from inside at night. Scogin and Elam play an active role in the debates surrounding contemporary modern architecture and their work reflects this intensive involvement.



◀ Mountain House, Dillard, Georgia, 1996, section

◀ both: Ohio State School of Architecture, Columbus, Ohio, 2004



◀ both: Mountain house, Dillard, Georgia, 1996



◀ Herman Miller manufacturing and distribution facility, Cherokee County, Georgia, 2000

◀ Wellesley College, Wellesley, Massachusetts, 2005



◀ Residential building, Atlanta, Georgia, 2006