

建築と都市  
Architecture and Urbanism  
June 1992  
No.261

第261号 平成4年6月11日発行/毎月10日発行/昭和64年5月13日第1種郵便物認可/ISSN 0386-7160

92:06

特集  
スコギン、エラム・アンド・ブレイ  
エモリー大学、ターナー・ヴィレッジ  
シマル邸 他  
評論: マーク・リンダー

Feature  
Seogin Elam and Bray  
Turner Village, Emory Univ.  
House Chmar and other works  
Criticism: Mark Linder



# Morrow Branch Library

Morrow, Georgia 1991

モローの図書館分館

ジョージア州モロー 1991

Project title: Carol Cobb Turner Branch Library

Client: Clayton County Library System

Program: A branch library

**Concept:** The Morrow Branch Library, a 10,000 ft<sup>2</sup> 59,000 volume community facility, is an institutional loner in a horse pasture bounded by a strip shopping center, a wet weather draw, a busy county road, and subdivision houses, sideways-facing and self-concerned, that refuse to acknowledge the road's existence. The site is flat, filled with heat, and yellow topped bitter weeds, loblolly pines and june bug beetles. Its most extraordinary feature is its ceiling of blue sky and bright clouds brushed by pine needles. The 1 acre site is consumed by the program of proposed building and parking and the best view is up. The scheme reflects this, with glass and views high up and enclosing walls down low. Other influences are more abstract, distant connections, such as the headquarters library, the county courthouse, the close-by neighborhoods, Rex and Ellenwood, and the cardinal points of the compass. Along with the property lines, the lines of influence from these entities give form to the building. The building plan is, in effect, an asymmetrical, skewed dogtrot with a dividing breezeway/corridor with rooms off both sides. To the north of the corridor are the public meeting room, toilets, and administrative services. Intruding into the corridor is the circulation desk with visual access to both building entrances, the restroom and the public meeting room entrances. The children's collection and the general collection are to the south. Along the south property line, just outside of the children's and general collection is a small garden area. Also intruding into the corridor and tangent to the circulation desk is a vertical element that marks the center of the site and the building and signifies the center of a new reality for the branch library. It is a negative center "support" from which the mushroom-like ceiling/roof forms emerge and rise toward the perimeter. Cost: \$760,000

Building area: 10,000 ft<sup>2</sup>

**Architects:** Scogin Elam and Bray Architects, Inc.; Merrill Elam with Mack Scogin and Lloyd Bray with Carlos Tardio, Richard Ashworth, Julie Sanford, Jeff Atwood, Susan Desko, Criss Mills

**Collaborators:** Interior design: Scogin Elam and Bray Architects, Inc.; General contractor: Lusk & Associates, Inc.; Structural engineer: Pruitt Eberly, Inc.; Mechanical engineer: Sunbelt, An Engineering Group; Electrical engineer: Engineering Design Concepts, Inc.; Lighting consultant: Ramon Luminance Design; Specifications: Williamson & Associates, Inc.; Civil engineer: Fore-Site Land Surveyors; Landscape architect: Doug Allen, ASLA; Costing: Costing Services Group; Model photography: Lloyd Bray ■

作品名称: キャロル・コップ・ターナー

図書館分館

敷地: 道路沿いのショッピング・センター、雨水調整池、交通量の多い幹線道路、一戸建の住宅地に囲まれた4,000m<sup>2</sup>の牧草地。平坦で、熱気、雑草、松、カブトムシがいる。

施主: クレイントン群図書館局

要求項目: 図書館分館

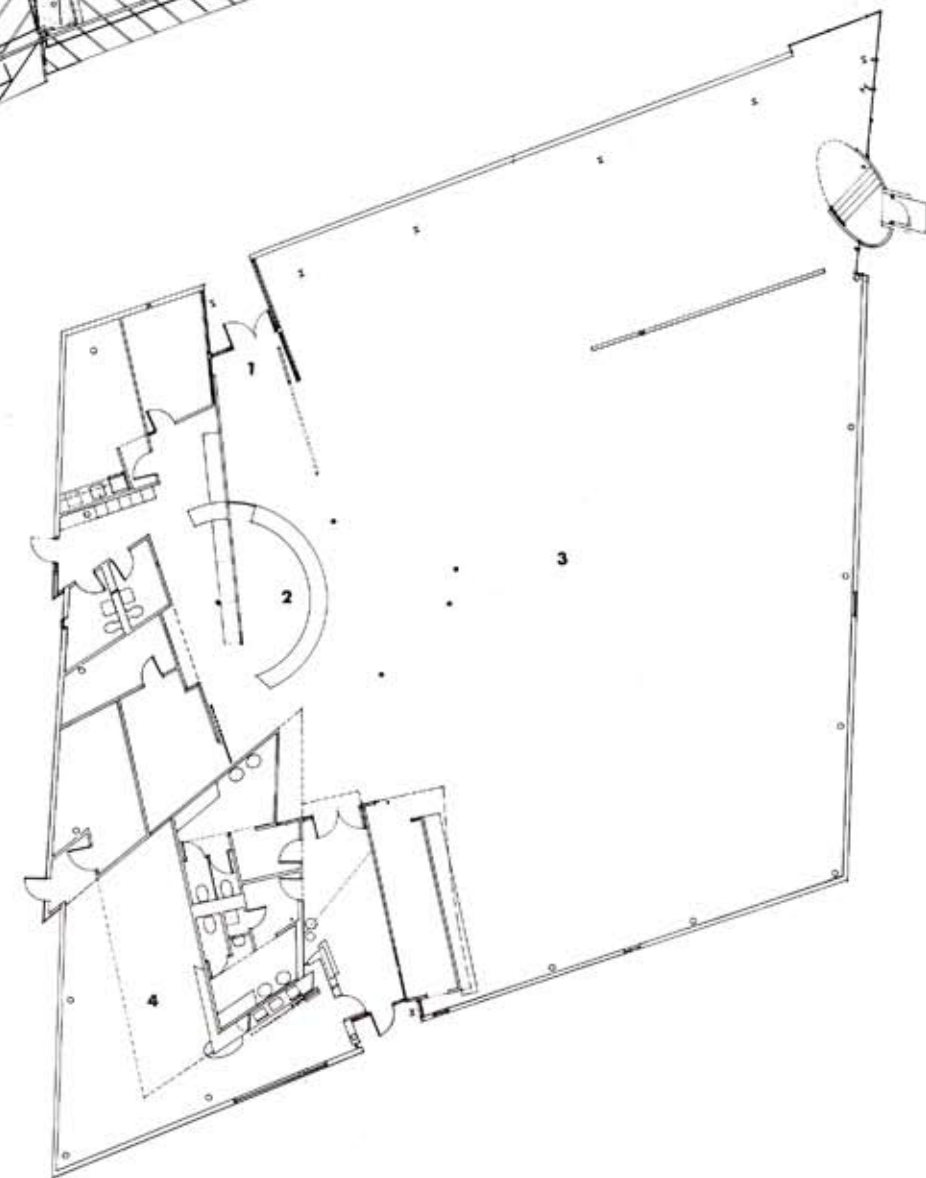
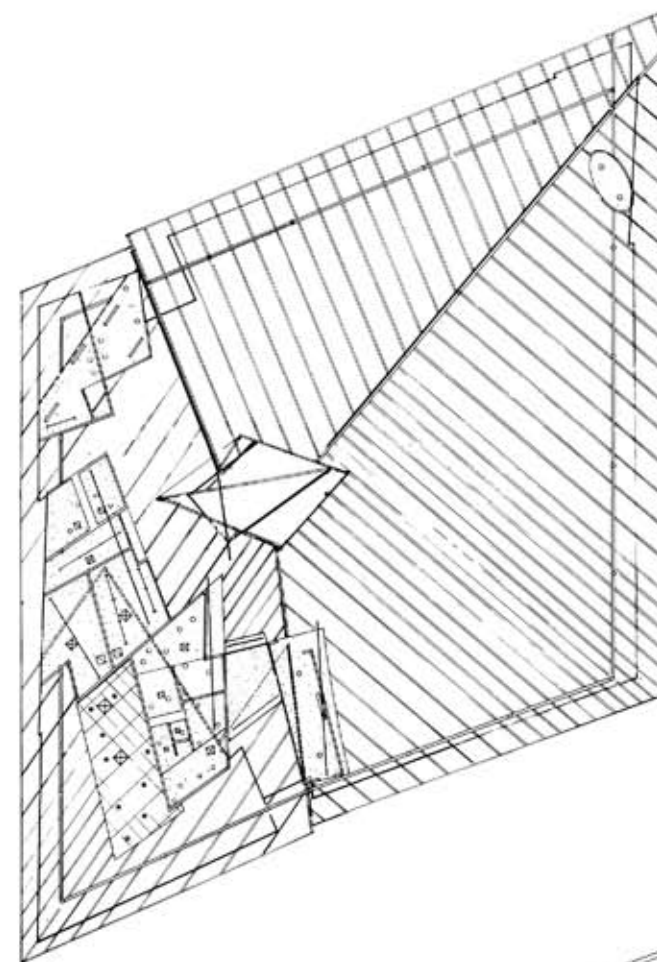
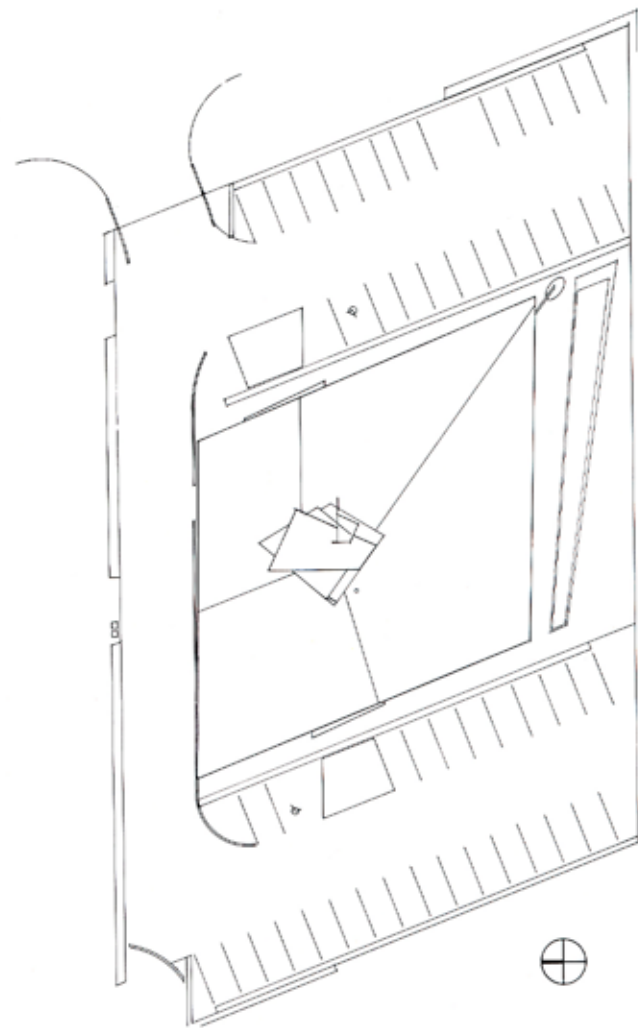
基本概念: 牧草地の中の一匹狼のように斜に構えた、自己中心的なもの。敷地は建物と駐車場一杯になり、最良の眺めは空である。そこで、ガラスを多用し、視界を高い方へ導き、低い方は壁で囲んだ。

建物計画: 平面は非対称で、斜めに展開

し、風の通り道ともなる廊下が空間を二分する。廊下の北側には会議室、トイレ、管理部門がある。この廊下突き出している貸出しデスクからは、玄関、トイレ、会議室のドアを見渡せる。子供用・一般用書架は廊下の南側の敷地境界線に沿い、すぐ外側には小さな庭園がある。また、垂直方向に延びた空間が廊下に侵入し、敷地と建物の中心であると同時に、この図書館の活動の中心であることを明確に示している。この空間では、茸のような天上と屋根が立ち上がり、敷地境界に向かって広がっている。

工事費用: 76万ドル

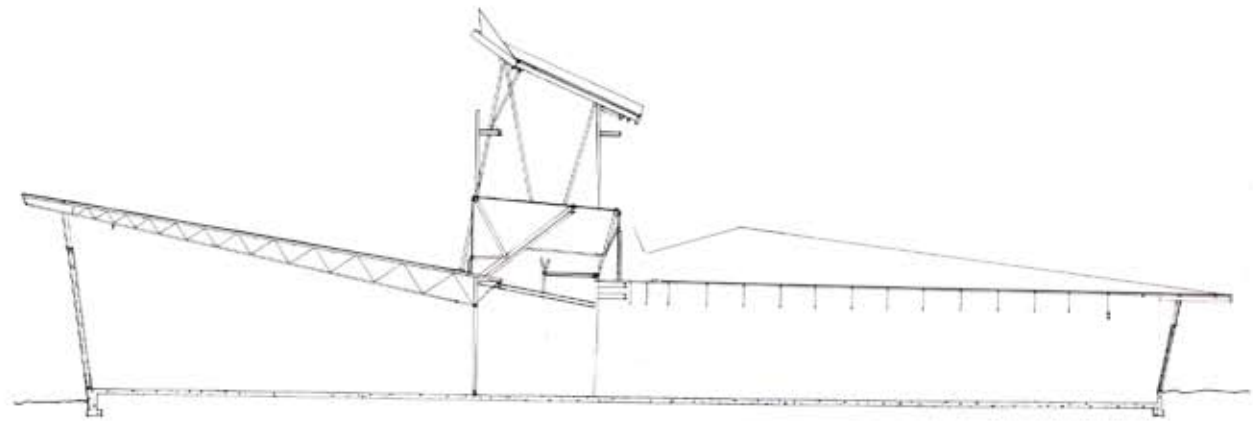
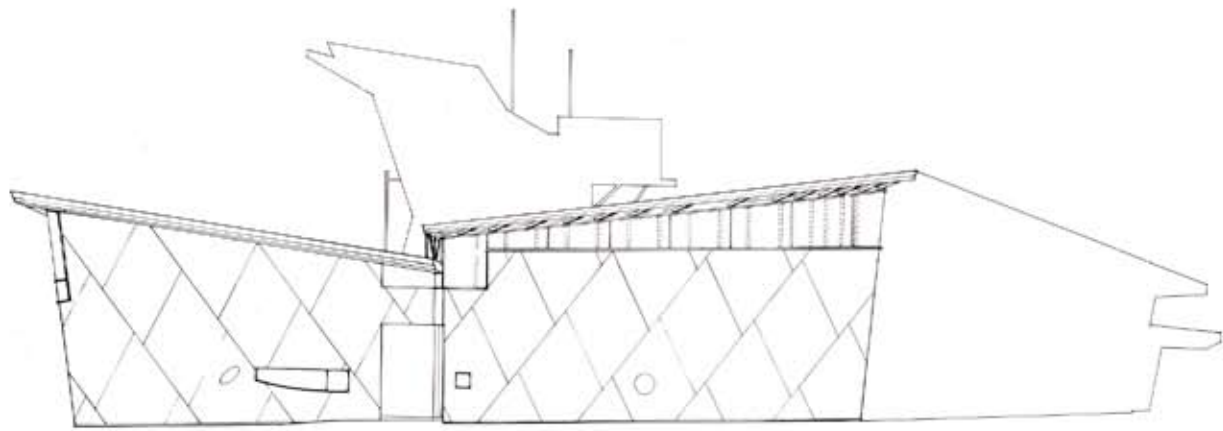
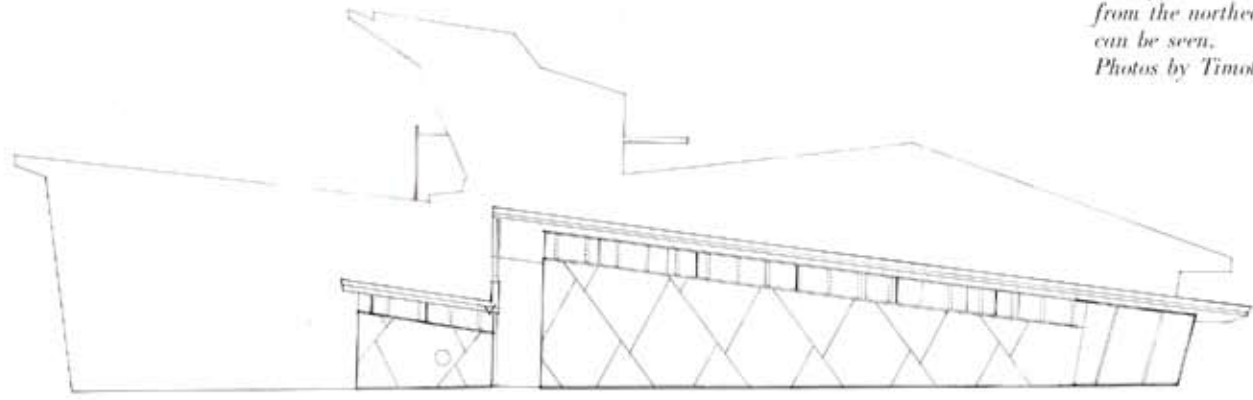
建物面積: 1,000m<sup>2</sup>■



Opposite: Site plan. Above: Ceiling plan. Below: Floor plan, scale: 1/250. Legend: 1) Entrance, 2) Circulation desk, 3) Reading room, 4) Public meeting room

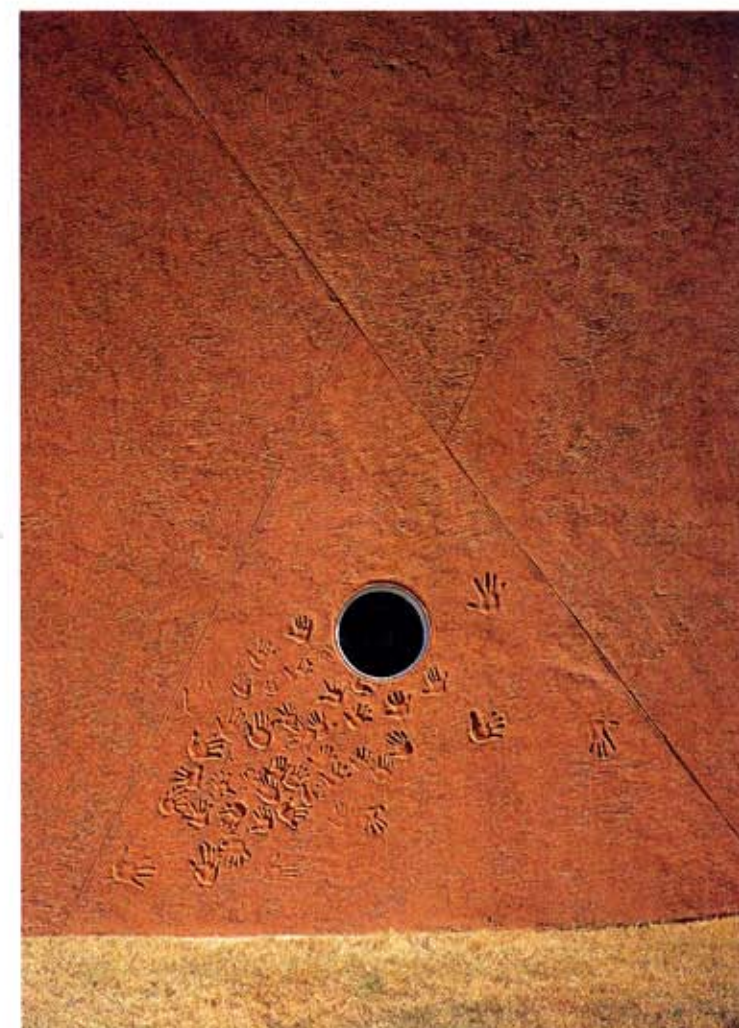
左頁: 配置図。上: 天井伏図。下: 平面図。縮尺: 1/250。凡例: 1) 入口 2) 貸出しデスク 3) 閲覧室 4) 会議室

Above: East elevation. Center:  
West elevation. Below:  
North-south section. Opposite:  
Exterior view from west entrance  
side, pp. 86-87; General view  
from the northeast. East entrance  
can be seen.  
Photos by Timothy Hursley.



上：東立面図。中央：西立面図。下：南北断面図。右頁：西側外観、キャノピーの付いた入口側より見る。86～87頁：北東側全景、東側の看板のある入口が見える。





*Opposite: Exterior view from the southeast corner. Above: Detail of the west exterior wall. The stucco wall is decorated with children's hand imprints. pp. 90-91: Interior view. The circular desk is on the left hand side. Photos by Timothy Hursley.*

左頁：外観、東南角部より見る。上：西側外壁詳細。スタッコ仕上げの壁に、装飾として子供たちの手跡が付けられている。90～91頁：図書館内部。左手は、円環状にデザインされた貸出し用デスク。

